

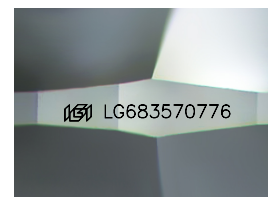
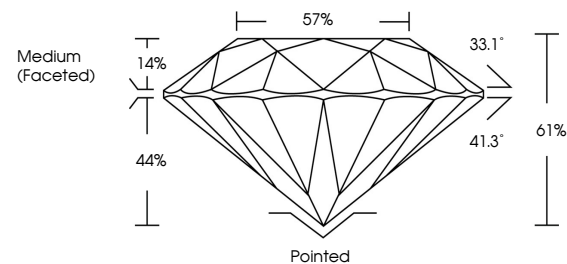


ELECTRONIC COPY

LABORATORY GROWN DIAMOND REPORT

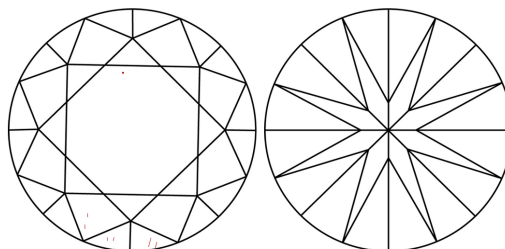
LG683570776
Report verification at igi.org

PROPORTIONS



Sample Image Used

CLARITY CHARACTERISTICS



KEY TO SYMBOLS

Red symbols indicate internal characteristics.
Green symbols indicate external characteristics.

COLOR

D E F G H I J Faint Very Light Light

CLARITY

IF WS¹⁻² VS¹⁻² SI¹⁻² |¹⁻³

Internally Flawless	Very Very Slightly Included	Very Slightly Included	Slightly Included	Included
------------------------	--------------------------------	---------------------------	----------------------	----------



© IGI 2020, International Gemological Institute

FD - 10 20

www.igi.org

LABORATORY GROWN DIAMOND REPORT



February 28, 2025

IGI Report Number **LG683570776**Description **LABORATORY GROWN DIAMOND**Shape and Cutting Style **ROUND BRILLIANT**

Measurements	6.50 - 6.54 X 3.98 MM
--------------	-----------------------

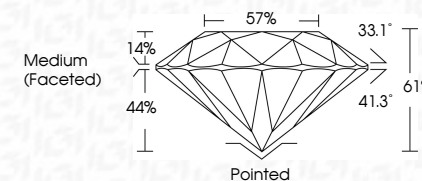
GRADING RESULTS

Carat Weight 1.02 CARAT

Color Grade D

Clarity Grade **VS 2**

Cut Grade **IDEAL**



ADDITIONAL GRADING INFORMATION

Polish **EXCELLENT**Symmetry **EXCELLENT**Fluorescence **NONE**Inscription(s) LG683570776

Comments: As Grown - No indication of post-growth treatment.

This Laboratory Grown Diamond was created by High Pressure High Temperature (HPHT) growth process.

Type II



February 28, 2025	1,02 CARAT
GI Report No. LG68570776	D
ROUND BRILLIANT	VVS 2
	IDEAL
	61%
	57%
	Medium (Fossilized)
	Polished
	EXCELLENT
	EXCELLENT
	NONE
	lg61 LG68570776
Comments:	
As Grown - No indication of post-growth	
enhancement.	
This Laboratory Growth Diamond was	
created by High Pressure High	
Temperature (HPHT) growth process.	
Type II	