

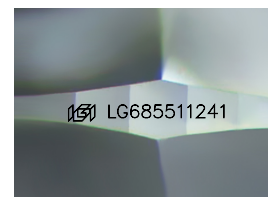
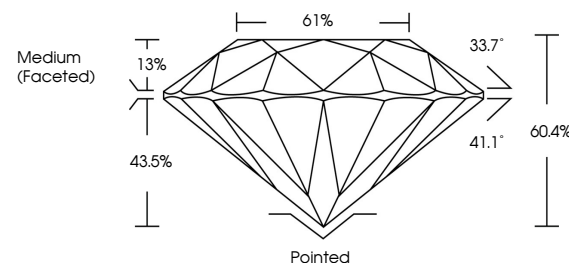


ELECTRONIC COPY

LABORATORY GROWN DIAMOND REPORT

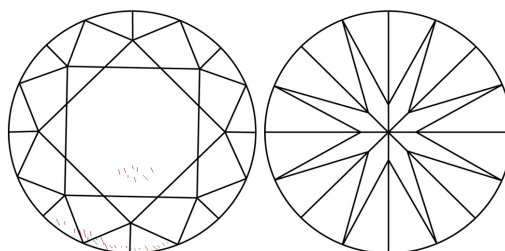
LG685511241
Report verification at igi.org

PROPORTIONS



Sample Image Used

CLARITY CHARACTERISTICS



KEY TO SYMBOLS

Red symbols indicate internal characteristics.
Green symbols indicate external characteristics.

COLOR

D E F G H I J Faint Very Light Light

CLARITY

IF WS¹⁻² VS¹⁻² SI¹⁻² |¹⁻³

Internally Flawless	Very Very Slightly Included	Very Slightly Included	Slightly Included	Included
------------------------	--------------------------------	---------------------------	----------------------	----------



© IGI 2020, International Gemological Institute

FD - 10 20

www.igi.org

LABORATORY GROWN DIAMOND REPORT



March 6, 2025

IGI Report Number **LG685511241**Description **LABORATORY GROWN DIAMOND**Shape and Cutting Style **ROUND BRILLIANT**

Measurements 7.18 - 7.24 X 4.35 MM

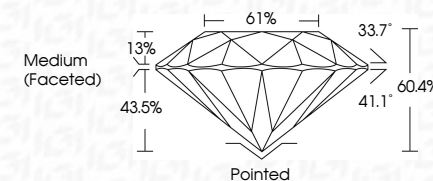
GRADING RESULTS

Carat Weight 1.40 CARAT

Color Grade D

Clarity Grade VS 1

Cut Grade **EXCELLENT**



ADDITIONAL GRADING INFORMATION

Polish **EXCELLENT**Symmetry **EXCELLENT**Fluorescence **NONE**Inscription(s) LG685511241

Comments: As Grown - No indication of post-growth treatment.

This Laboratory Grown Diamond was created by High Pressure High Temperature (HPHT) growth process.

Type II



March 6, 2025	
GJ Report No LG98551241	
ROUND BRILLIANT	
	1.40 CARAT
	D
	VS 1
	EXCELLENT
	60.4%
	61%
	Medium (Faceted)
	Pointed
	EXCELLENT
	Symmetry
	EXCELLENT
	NONE
	I69LG98551241
	Comments:
	No Growth - No indication of post-growth
	to its crown.
	This Laboratory Grown Diamond was
	created by High Pressure High
	temperature (HPHT) growth process.
	Type II