

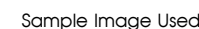
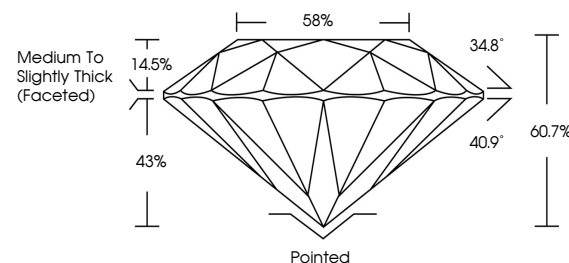


ELECTRONIC COPY

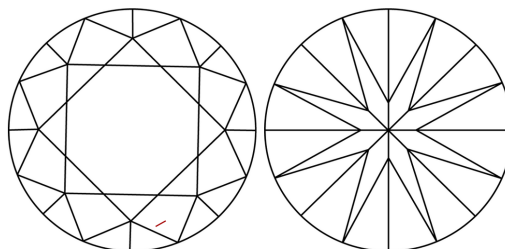
LABORATORY GROWN DIAMOND REPORT

LG685511324
Report verification at lgi.org

PROPORTIONS



CLARITY CHARACTERISTICS



KEY TO SYMBOLS

Red symbols indicate internal characteristics.
Green symbols indicate external characteristics.

COLOR

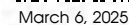
D E F G H I J Faint Very Light Light

CLARITY

IF WS¹⁻² VS¹⁻² SI¹⁻² |¹⁻³

Internally Flawless	Very Very Slightly Included	Very Slightly Included	Slightly Included	Included
------------------------	--------------------------------	---------------------------	----------------------	----------

LABORATORY GROWN DIAMOND REPORT

IGI Report Number **LG685511324**Description **LABORATORY GROWN DIAMOND**Shape and Cutting Style **ROUND BRILLIANT**

Measurements 7.17 - 7.20 X 4.36 MM

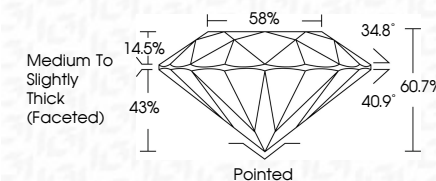
GRADING RESULTS

Carat Weight 1.38 CARAT

Color Grade D

Clarity Grade VS 1

Cut Grade **IDEAL**



ADDITIONAL GRADING INFORMATION

Polish **EXCELLENT**Symmetry **EXCELLENT**Fluorescence **NONE**Inscription(s) LG685511324

Comments: As Grown - No indication of post-growth treatment.

This Laboratory Grown Diamond was created by High Pressure High Temperature (HPHT) growth process.

Type II



© IGI 2020, International Gemological Institute

FD - 10 20



www.igi.org

March 6, 2025	Carat	1.30 CARAT
GI Report No LG485511324	D	VS 1
ROUND BRILLIANT	Color Grade	Ideal
	Clarity Grade	60.7%
	Depth	58%
	Table	Medium to Slightly Thick (Faceted)
	Girdle	Pointed
	Culet	EXCELLENT
	Polish	EXCELLENT
	Symmetry	NONE
	Fluorescence	69 (LS655511324)
	Inscriptions(s)	
Comments:	No Growth - No indication of post-growth to this diamond.	
	This Laboratory Grown Diamond was created by High Pressure High temperature (HPHT) growth process.	
	Type II	