

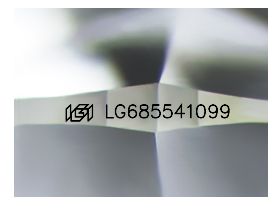
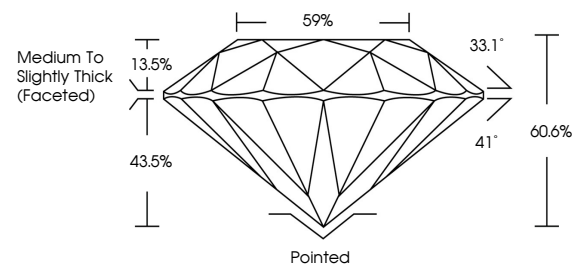


ELECTRONIC COPY

LABORATORY GROWN DIAMOND REPORT

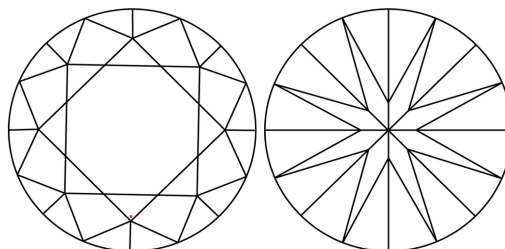
LG685541099
Report verification at igi.org

PROPORTIONS



Sample Image Used

CLARITY CHARACTERISTICS



KEY TO SYMBOLS

Red symbols indicate internal characteristics.
Green symbols indicate external characteristics.

COLOR

D E F G H I J Faint Very Light Light

CLARITY

IF WS¹⁻² VS¹⁻² SI¹⁻² |¹⁻³

Internally Flawless	Very Very Slightly Included	Very Slightly Included	Slightly Included	Included
------------------------	--------------------------------	---------------------------	----------------------	----------



February 19, 2025

IGI Report Number **LG685541099**Description **LABORATORY GROWN DIAMOND**Shape and Cutting Style **ROUND BRILLIANT**

Measurements 11.08 - 11.13 X 6.73 MM

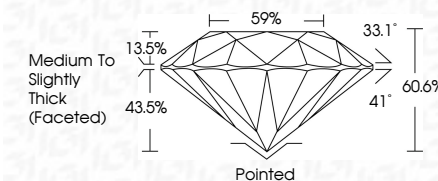
GRADING RESULTS

Carat Weight **5.08 CARATS**

Color Grade E

Clarity Grade VVS 2

Cut Grade **IDEAL**



ADDITIONAL GRADING INFORMATION

Polish EXCELLENT

Symmetry **EXCELLENT**Fluorescence **NONE**Inscription(s) LG685541099

Comments: This Laboratory Grown Diamond was created by Chemical Vapor Deposition (CVD) growth process.
Type IIa



© IGI 2020, International Gemological Institute

FD - 10 20



THIS DOCUMENT WAS PRODUCED WITH THE FOLLOWING SECURITY MEASURES: SPECIAL DOCUMENT PAPER, INK SCREENS, WATERMARK, BACKGROUND DESIGNS, HOLOGRAM AND OTHER SECURITY FEATURES NOT LISTED AND DO EXCEED DOCUMENT SECURITY INDUSTRY GUIDELINES

www.igi.org

February 19, 2025	5.08 CARATS
IGI Report No. LG585541099	
ROUND BRILLIANT	
11.08 - 11.13 X 7.5 MM	
Carat Weight	
Color Grade	E
Clarity Grade	VVS 2
Cut Grade	IDEAL
Depth	60.6%
Table	59%
Girdle	Medium to Slightly Thick (Faceted)
Culet	Polished
Polish	EXCELLENT
Symmetry	EXCELLENT
Fluorescence	NONE
Inscriptions(s)	IGI LG585541099
Comments:	
This is a Natural Colorless Round Brilliant Cut Type IIG	
certified by IGI. The diamond was analyzed by Chemical Vapor Deposition (CVD) growth process.	