

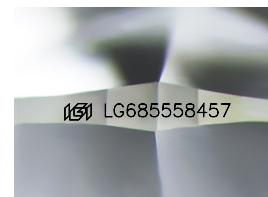
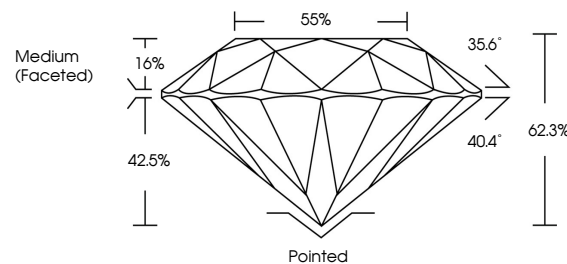


ELECTRONIC COPY

LABORATORY GROWN DIAMOND REPORT

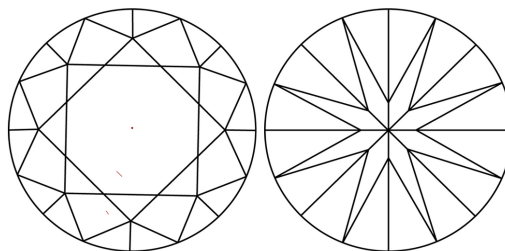
LG685558457
Report verification at igi.org

PROPORTIONS



Sample Image Used

CLARITY CHARACTERISTICS



KEY TO SYMBOLS

Red symbols indicate internal characteristics.
Green symbols indicate external characteristics.

COLOR

D E F G H I J Faint Very Light Light

CLARITY

IF WS¹⁻² VS¹⁻² S¹⁻² |¹⁻³

Internally Flawless	Very Very Slightly Included	Very Slightly Included	Slightly Included	Included
------------------------	--------------------------------	---------------------------	----------------------	----------



© IGI 2020, International Gemological Institute

FD - 10 20

www.igi.org

LABORATORY GROWN DIAMOND REPORT



March 2, 2025

IGI Report Number **LG685558457**Description **LABORATORY GROWN DIAMOND**Shape and Cutting Style **ROUND BRILLIANT**

Measurements 7.08 - 7.12 X 4.43 MM

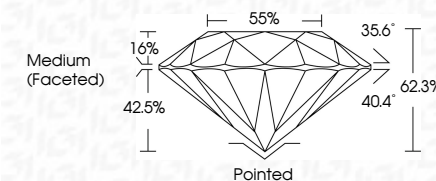
GRADING RESULTS

Carat Weight 1.38 CARAT

Color Grade D

Clarity Grade WS 2

Cut Grade **IDEAL**



ADDITIONAL GRADING INFORMATION

Polish **EXCELLENT**Symmetry **EXCELLENT**Fluorescence **NONE**Inscription(s) LG685558457

Comments: As Grown - No indication of post-growth treatment.

This Laboratory Grown Diamond was created by High Pressure High Temperature (HPHT) growth process.

Type II



	March 2, 2026	GJ Report No LG9855947
	ROUND BRILLIANT	
	D-08 - 7.12 X 4.43 MM	
	Carat Weight	1.38 CARAT
	Color Grade	Vs2 D
	Clarity Grade	Ideal
	Cut Grade	EXCEL.
	Depth	62.3%
	Tabelle	85%
	Grille	Medium (Faceted)
	Culet	Painted
	Rough	EXCELLENT
	Symmetry	EXCELLENT
	Fluorescence	NONE
	Identification	#(B) LG9855947
	Comments:	
		No indication of post-growth treatment.
		This Laboratory Grown Diamond was created by High Pressure High Temperature (HPHT) growth process.
		Type IIa