



**ELECTRONIC COPY**

## LABORATORY GROWN DIAMOND REPORT

|                         |                          |
|-------------------------|--------------------------|
| February 24, 2025       |                          |
| IGI Report Number       | LG685564559              |
| Description             | LABORATORY GROWN DIAMOND |
| Shape and Cutting Style | ROUND BRILLIANT          |
| Measurements            | 6.61 - 6.65 X 3.95 MM    |

## GRADING RESULTS

|               |            |
|---------------|------------|
| Carat Weight  | 1.05 CARAT |
| Color Grade   | D          |
| Clarity Grade | VS 2       |
| Cut Grade     | IDEAL      |

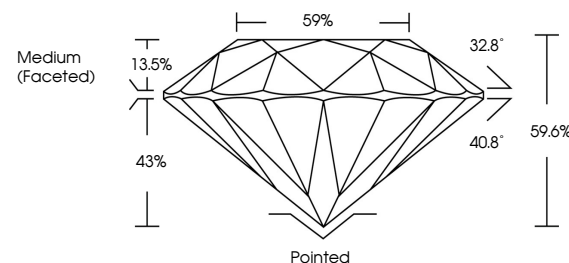
### ADDITIONAL GRADING INFORMATION

|                |                |
|----------------|----------------|
| Polish         | EXCELLENT      |
| Symmetry       | EXCELLENT      |
| Fluorescence   | NONE           |
| Inscription(s) | 15 LG685564559 |

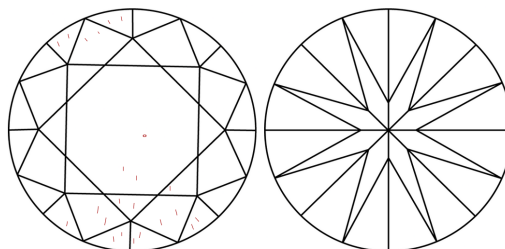
Comments: As Grown - No indication of post-growth treatment.  
This Laboratory Grown Diamond was created by High Pressure High Temperature (HPHT) growth process.  
Type II

LG685564559  
Report verification at [lgi.org](https://lgi.org)

## PROPORTIONS



## CLARITY CHARACTERISTICS



### KEY TO SYMBOLS

Red symbols indicate internal characteristics.  
Green symbols indicate external characteristics.



Sample Image Used

## COLOR

D E F G H I J Faint Very Light Light

## CLARITY

IF WS<sup>1-2</sup> VS<sup>1-2</sup> SI<sup>1-2</sup> |<sup>1-3</sup>

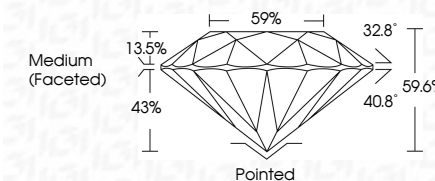
| Internally<br>Flawless | Very Very<br>Slightly Included | Very<br>Slightly Included | Slightly<br>Included | Included |
|------------------------|--------------------------------|---------------------------|----------------------|----------|
|------------------------|--------------------------------|---------------------------|----------------------|----------|



|                         |                          |
|-------------------------|--------------------------|
| February 24, 2025       |                          |
| IGI Report Number       | LG685564559              |
| Description             | LABORATORY GROWN DIAMOND |
| Shape and Cutting Style | ROUND BRILLIANT          |
| Measurements            | 6.61 - 6.65 X 3.95 MM    |

## GRADING RESULTS

|               |            |
|---------------|------------|
| Carat Weight  | 1.05 CARAT |
| Color Grade   | D          |
| Clarity Grade | VS 2       |
| Cut Grade     | IDEAL      |



### ADDITIONAL GRADING INFORMATION

|  |                            |
|--|----------------------------|
| Polish   | EXCELLENT                  |
| Symmetry   | EXCELLENT                  |
| Fluorescence   | NONE                       |
| Inscription(s)   | <del>(G)</del> LG685564559 |
| Comments: As Grown - No indication of post-growth treatment.                                       |                            |
| This Laboratory Grown Diamond was created by High Pressure High Temperature (HPHT) growth process. |                            |
| Type II  |                            |



© IGI 2020, International Gemological Institute

FD - 10 20



THIS DOCUMENT WAS PRODUCED WITH THE FOLLOWING SECURITY MEASURES: SPECIAL DOCUMENT PAPER, INK SCREENS, WATERMARK, BACKGROUND DESIGNS, HOLOGRAM AND OTHER SECURITY FEATURES NOT LISTED AND DO EXCEED DOCUMENT SECURITY INDUSTRY GUIDELINES

**www.igi.org**

|  |                       |             |                 |                  |            |
|--|-----------------------|-------------|-----------------|------------------|------------|
| February 24, 2025                        | Carat Weight          | Color Grade | Clarity Grade   | VS 2             | 1.05 CARAT |
| Report No LG68554659                     | 3.61 - 6.65 X 3.95 MM |             | Cut Grade       | IDEAL            |            |
| ROUND BRILLIANT                          |                       |             | Depth           | 59.6%            |            |
|  |                       |             | Table           | 57%              |            |
|  |                       |             | Grainle         | Medium (Faceted) |            |
|  |                       |             | Cluelt          | Polished         |            |
|  |                       |             | Polsh           | EXCELLENT        |            |
|  |                       |             | Symmetry        | EXCELLENT        |            |
|  |                       |             | Fluorescence    | NONE             |            |
|  |                       |             | Inscriptions(s) | lg61 LG68554659  |            |
| Comments:                                |                       |             |                 |                  |            |
| No Growth - No indication of post-growth |                       |             |                 |                  |            |
| This Laboratory Grown Diamond was        |                       |             |                 |                  |            |
| created by High Pressure High            |                       |             |                 |                  |            |
| Temperature (HPHT) growth process.       |                       |             |                 |                  |            |