



**INTERNATIONAL  
GEMOLOGICAL  
INSTITUTE**

**ELECTRONIC COPY**

## LABORATORY GROWN DIAMOND REPORT

LG685586651  
Report verification at [igi.org](https://www.igi.org)

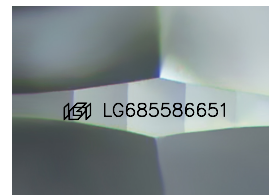
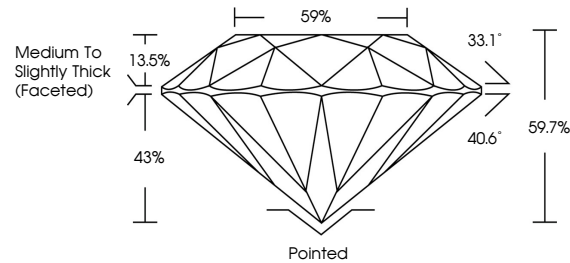
|                         |                          |
|-------------------------|--------------------------|
| February 27, 2025       |                          |
| IGI Report Number       | LG685586651              |
| Description             | LABORATORY GROWN DIAMOND |
| Shape and Cutting Style | ROUND BRILLIANT          |
| Measurements            | 8.61 - 8.63 X 5.14 MM    |
| <b>GRADING RESULTS</b>  |                          |
| Carat Weight            | 2.34 CARATS              |
| Color Grade             | F                        |
| Clarity Grade           | VS 1                     |
| Cut Grade               | IDEAL                    |

### ADDITIONAL GRADING INFORMATION

|                |   |
|----------------|---|
| Polish         | EXCELLENT   |
| Symmetry       | EXCELLENT   |
| Fluorescence   | NONE  |
| Inscription(s) |  LG685586651 |

Comments: This Laboratory Grown Diamond was created by Chemical Vapor Deposition (CVD) growth process.  
Type IIa

## PROPORTIONS



Sample Image Used

**COLOR**

D E F G H I J Faint Very Light Light

## CLARITY

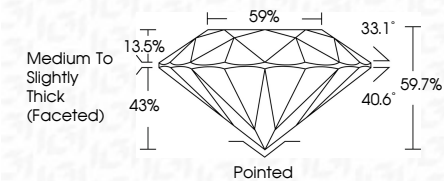
IF                      WS<sup>1-2</sup>                      VS<sup>1-2</sup>                      SI<sup>1-2</sup>                      I<sup>1-3</sup>

|                        |                                |                           |                      |          |
|------------------------|--------------------------------|---------------------------|----------------------|----------|
| Internally<br>Flawless | Very Very<br>Slightly Included | Very<br>Slightly Included | Slightly<br>Included | Included |
|------------------------|--------------------------------|---------------------------|----------------------|----------|

## LABORATORY GROWN DIAMOND REPORT



|                         |                          |
|-------------------------|--------------------------|
| February 27, 2025       |                          |
| IGI Report Number       | LG685586651              |
| Description             | LABORATORY GROWN DIAMOND |
| Shape and Cutting Style | ROUND BRILLIANT          |
| Measurements            | 8.61 - 8.63 X 5.14 MM    |
| GRADING RESULTS         |                          |
| Carat Weight            | 2.34 CARATS              |
| Color Grade             | F                        |
| Clarity Grade           | VS 1                     |
| Cut Grade               | IDEAL                    |



### ADDITIONAL GRADING INFORMATION

|                |            |
|----------------|------------|
| Polish         | EXCELLENT  |
| Symmetry       | EXCELLENT  |
| Fluorescence   | NONE       |
| Inscription(s) | LG68586651 |

Comments: This Laboratory Grown Diamond was created by Chemical Vapor Deposition (CVD) growth process.  
Type IIa



© IGI 2020, International Gemological Institute

FD - 10 20



THIS DOCUMENT WAS PRODUCED WITH THE FOLLOWING SECURITY MEASURES: SPECIAL DOCUMENT PAPER, INK SCREENS, WATERMARK, BACKGROUND DESIGNS, HOLOGRAM AND OTHER SECURITY FEATURES NOT LISTED AND DO EXCEED DOCUMENT SECURITY INDUSTRY GUIDELINES

February 27, 2025  
IGI Report No LG685586651  
ROUND BRILLIANT

|                       |               |               |              |                                    |
|-----------------------|---------------|---------------|--------------|------------------------------------|
| 8.51 - 8.63 X 5.14 MM | Color Grade   | Clarity Grade | Carat Weight | 2.34 CARATS                        |
|                       | Out Grade     | Out Grade     |              | F                                  |
|                       | Depth         | Depth         |              | VS 1                               |
|                       | Table         | Table         |              | IDEAL                              |
|                       | Grade         | Grade         |              | 96.7%                              |
|                       |               |               |              | 59%                                |
|                       |               |               |              | Medium to slightly Thick (faceted) |
|                       | Cut           | Cut           |              | Pointed                            |
|                       | Polish        | Polish        |              | EXCELLENT                          |
|                       | Symmetry      | Symmetry      |              | EXCELLENT                          |
|                       | Fluorescence  | Fluorescence  |              | NONE                               |
|                       | Inclusions(s) | Inclusions(s) |              | 4811 G66565651                     |

**Comments:**  
This Laboratory Grown Diamond was created by Chemical Vapor Deposition (CVD) growth process.