

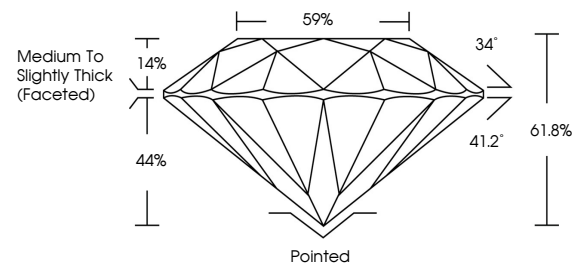


ELECTRONIC COPY

LABORATORY GROWN DIAMOND REPORT

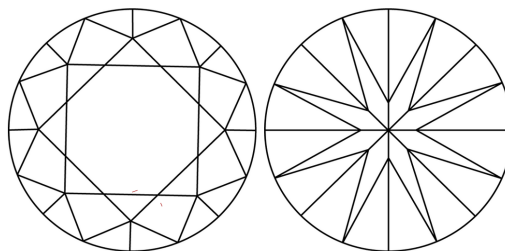
LG686504605
Report verification at igi.org

PROPORTIONS



Sample Image Used

CLARITY CHARACTERISTICS



KEY TO SYMBOLS

Red symbols indicate internal characteristics.
Green symbols indicate external characteristics.

COLOR

D E F G H I J Faint Very Light Light

CLARITY

IF WS¹⁻² VS¹⁻² S¹⁻² |¹⁻³

Internally Flawless	Very Very Slightly Included	Very Slightly Included	Slightly Included	Included
------------------------	--------------------------------	---------------------------	----------------------	----------



© IGI 2020, International Gemological Institute

FD - 10 20

www.igi.org

LABORATORY GROWN DIAMOND REPORT



March 18, 2025

IGI Report Number **LG686504605**Description **LABORATORY GROWN DIAMOND**Shape and Cutting Style **ROUND BRILLIANT**

Measurements 6.50 - 6.57 X 4.04 MM

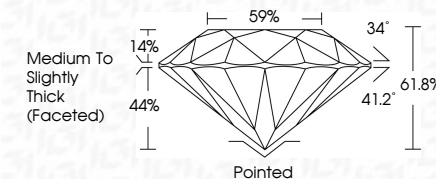
GRADING RESULTS

Carat Weight 1.06 CARAT

Color Grade D

Clarity Grade WS 2

Cut Grade **EXCELLENT**



ADDITIONAL GRADING INFORMATION

Polish **EXCELLENT**Symmetry **EXCELLENT**Fluorescence **NONE**Inscription(s)  LG686504605

Comments: As Grown - No indication of post-growth treatment.

This Laboratory Grown Diamond was created by High Pressure High Temperature (HPHT) growth process.

Type II



March 18, 2025	1.06 CARAT	VVS 2	EXCELLENT	61.5%	59%	Medium to slightly Thick (faceted)	Pointed	EXCELLENT	EXCELLENT	NONE	#61 LG56950405	Comments: as Grown. No indication of post-growth treatment.
GI Report No LG56950405												This Laboratory Grown Diamond was created by High Pressure High Temperature (HPHT) growth process.
ROUND BRILLIANT	4.50 - 4.57 X 4.04 MM	Color: White	Clarity: Grade	Cut: Grade	Depth: Grade	Table: Grade	Girdle: Grade	Culet: Present	Symmetry: Excellent	Fluorescence: None		Type 1a