



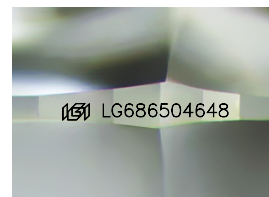
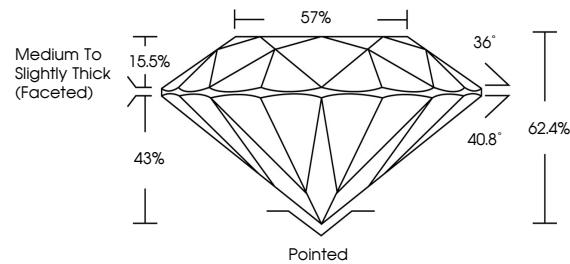
**INTERNATIONAL
GEMOLOGICAL
INSTITUTE**

ELECTRONIC COPY

LABORATORY GROWN DIAMOND REPORT

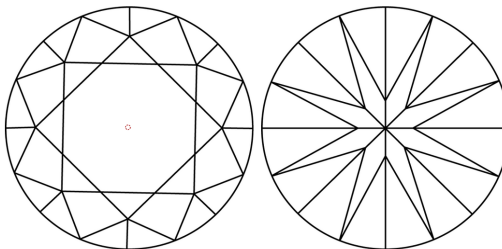
LG686504648
Report verification at igi.org

PROPORTIONS



Sample Image Used

CLARITY CHARACTERISTICS



KEY TO SYMBOLS

Red symbols indicate internal characteristics.
Green symbols indicate external characteristics.

COLOR

D E F G H I J Faint Very Light Light

CLARITY

| IF | WS ¹⁻² | VS ¹⁻² | SI ¹⁻² | 1 |
|----|-------------------|-------------------|-------------------|---|
|----|-------------------|-------------------|-------------------|---|

| | | | | |
|------------------------|--------------------------------|---------------------------|----------------------|----------|
| Internally Flawless | Very Very Slightly Included | Very Slightly Included | Slightly Included | Included |
|------------------------|--------------------------------|---------------------------|----------------------|----------|



© IGI 2020, International Gemological Institute

FD - 10 20

www.igi.org

LABORATORY GROWN DIAMOND REPORT



March 6, 2025

IGI Report Number **LG686504648**Description **LABORATORY GROWN DIAMOND**Shape and Cutting Style **ROUND BRILLIANT**

Measurements **6.44 - 6.49 X 4.03 MM**

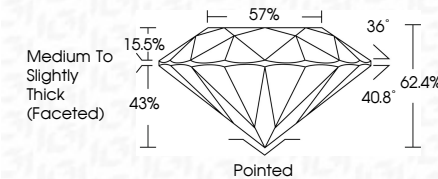
GRADING RESULTS

Carat Weight 1.04 CARAT

Color Grade **D**

Clarity Grade VVS 2

Cut Grade **IDEAL**



ADDITIONAL GRADING INFORMATION

Polish **EXCELLENT**Symmetry **EXCELLENT**Fluorescence **NONE**Inscription(s) LG68650464

Comments: As Grown - No indication of post-growth treatment.

This Laboratory Grown Diamond was created by High Pressure High Temperature (HPHT) growth process.
Type II



IG

| | | | | | | | | | | | | | | | | |
|---------------|---------------------------|-------------|-----------------------|-------------|---------------|-----------|-------|-------|--------|-----------------------------------|----------|-----------|-----------|--------------------------------|----------------|---|
| March 6, 2025 | IGI Report No. LG58560448 | ROUND BLANK | 4.64 - 6.49 x 4.03 MM | 1.04 CARAT | D | VVS 2 | IDEAL | 62.4% | 57% | Medium to slightly thick (fasted) | Polished | EXCELLENT | EXCELLENT | NONE | lgf LG58560448 | Comments: As Grown - No indication of post-growth treatment. The Laboratory Grown Diamond was synthesized using High Pressure High Temperature (HPHT) growth process. Type IIa |
| | | | | Color Grade | Clarity Grade | Cut Grade | Depth | Table | Girdle | | Culet | Polish | Symmetry | Fluorescence Description(s) | | |

Comments:
As Grown - No indication of post-growth treatment
This Laboratory Grown Diamond was created by High Pressure High Temperature (HPHT) growth process.
Type II