



ELECTRONIC COPY

LABORATORY GROWN DIAMOND REPORT

March 17, 2025	
IGI Report Number	LG686504856
Description	LABORATORY GROWN DIAMOND
Shape and Cutting Style	ROUND BRILLIANT
Measurements	6.48 - 6.52 X 4.03 MM

GRADING RESULTS

Carat Weight	1.04 CARAT
Color Grade	D
Clarity Grade	VVS 2
Cut Grade	IDEAL

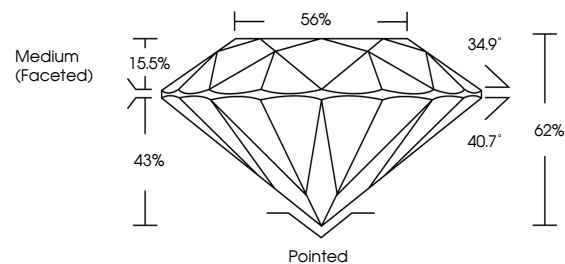
ADDITIONAL GRADING INFORMATION

Polish	EXCELLENT
Symmetry	EXCELLENT
Fluorescence	NONE
Inscription(s)	 LG686504856

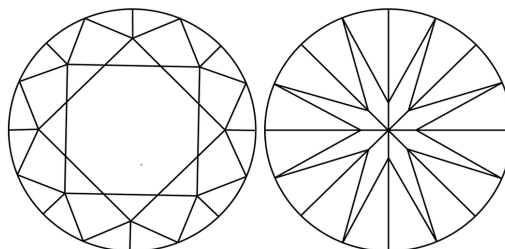
Comments: As Grown - No indication of post-growth treatment.
This Laboratory Grown Diamond was created by High Pressure High Temperature (HPHT) growth process.
Type II

LG686504856
Report verification at igi.org

PROPORTIONS

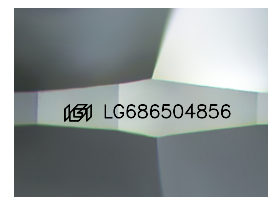


CLARITY CHARACTERISTICS



KEY TO SYMBOLS

Red symbols indicate internal characteristics.
Green symbols indicate external characteristics.



Sample Image Used

COLOR

D E F G H I J Faint Very Light Light

CLARITY

IF WS¹⁻² VS¹⁻² SI¹⁻² I¹⁻³

Internally Flawless	Very Very Slightly Included	Very Slightly Included	Slightly Included	Included
------------------------	--------------------------------	---------------------------	----------------------	----------

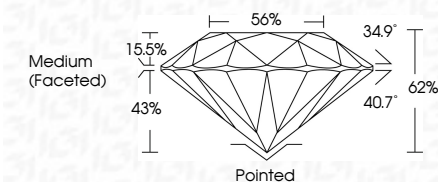
LABORATORY GROWN DIAMOND REPORT



March 17, 2025	
IGI Report Number	LG686504856
Description	LABORATORY GROWN DIAMOND
Shape and Cutting Style	ROUND BRILLIANT
Measurements	6.48 - 6.52 X 4.03 MM

GRADING RESULTS

Carat Weight	1.04 CARAT
Color Grade	D
Clarity Grade	VVS 2
Cut Grade	IDEAL



ADDITIONAL GRADING INFORMATION

Polish	EXCELLENT
Symmetry	EXCELLENT
Fluorescence	NONE
Inscription(s)	(G) LG686504856
Comments: As Grown - No indication of post-growth treatment.	
This Laboratory Grown Diamond was created by High Pressure High Temperature (HPHT) growth process.	
Type II	



© IGI 2020, International Gemological Institute

FD - 10 20



THIS DOCUMENT WAS PRODUCED WITH THE FOLLOWING SECURITY MEASURES: SPECIAL DOCUMENT PAPER, INK SCREENS, WATERMARK, BACKGROUND DESIGNS, HOLOGRAM AND OTHER SECURITY FEATURES NOT LISTED AND DO EXCEED DOCUMENT SECURITY INDUSTRY GUIDELINES

www.igi.org

March 17, 2025	Report No. LG566504856	ROUND BRILLIANT	6.48 - 6.52 X 4.03 MM	Color Grade	Clarity Grade	VVS 2	1.04 CARAT
					Cut Grade	IDEAL	
					Depth	62%	
					Table	85%	
					Grade	Medium (Faceted)	
					Culet	POINTED	
					Polish	EXCELLENT	
					Symmetry	EXCELLENT	
					Fluorescence	NONE	
					Inscriptions	lg91 LG566504856	
Comments:				As Grown - No indication of post-growth treatment. Very Good. Diamond was created by High Pressure High temperature (HPHT) growth process.			
Type II							