



**ELECTRONIC COPY**

## LABORATORY GROWN DIAMOND REPORT

March 17, 2025	
IGI Report Number	LG686506127
Description	LABORATORY GROWN DIAMOND
Shape and Cutting Style	ROUND BRILLIANT
Measurements	6.47 - 6.51 X 3.94 MM

## GRADING RESULTS

Carat Weight	1.02 CARAT
Color Grade	D
Clarity Grade	VS 1
Cut Grade	IDEAL

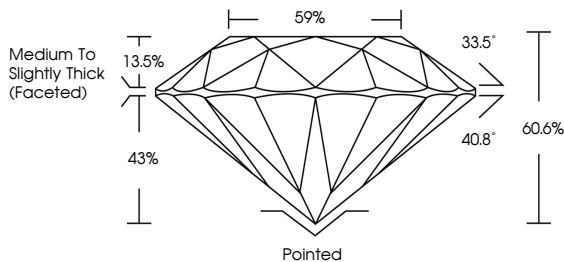
### ADDITIONAL GRADING INFORMATION

Polish	EXCELLENT
Symmetry	EXCELLENT
Fluorescence	NONE
Inscription(s)	 LG686506127

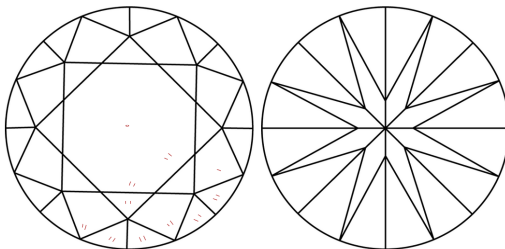
Comments: As Grown - No indication of post-growth treatment.  
This Laboratory Grown Diamond was created by High Pressure High Temperature (HPHT) growth process.  
Type II

LG686506127  
Report verification at [igi.org](https://igi.org)

## PROPORTIONS

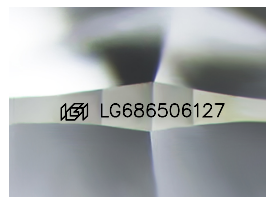


## CLARITY CHARACTERISTICS



## KEY TO SYMBOLS

Red symbols indicate internal characteristics.  
Green symbols indicate external characteristics.



Sample Image Used

**COLOR**

D E F G H I J Faint Very Light Light

## CLARITY

IF                      WS<sup>1-2</sup>                      VS<sup>1-2</sup>                      SI<sup>1-2</sup>                      |<sup>1-3</sup>

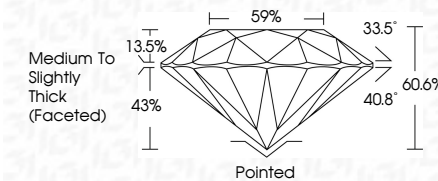
Internally Flawless	Very Very Slightly Included	Very Slightly Included	Slightly Included	Included
------------------------	--------------------------------	---------------------------	----------------------	----------



March 17, 2025	
IGI Report Number	LG686506127
Description	LABORATORY GROWN DIAMOND
Shape and Cutting Style	ROUND BRILLIANT
Measurements	6.47 - 6.51 X 3.94 MM

## GRADING RESULTS

Carat Weight	1.02 CARAT
Color Grade	D
Clarity Grade	VS 1
Cut Grade	IDEAL



### ADDITIONAL GRADING INFORMATION

Polish	EXCELLENT
Symmetry	EXCELLENT
Fluorescence	NONE
Inscription(s)	(G) LG686506127
Comments: As Grown - No indication of post-growth treatment.	
This Laboratory Grown Diamond was created by High Pressure High Temperature (HPHT) growth process.	
Type II	



© IGI 2020, International Gemological Institute

FD - 10 20

**www.igi.org**



March 17, 2025  
IGI Report No LG686506127  
ROUND BRILLIANT

100% RADIANT		4.67 - 4.51 X 3.94 MM		1.02 CARAT
		Carat Weight	D	
		Color Grade	VS 1	
		Clarity Grade	IDEAL	
		Cut Grade	60.6%	
		Depth	59%	
		Table	Medium to Slightly Thick (faceted)	
		Girdle	Pointed	
		Culet	EXCELLENT	
		Polish	EXCELLENT	
Symmetry	NONE			
Fluorescence	None			
Comments	4641 100% Radiant			

**Comments:**  
As Grown - No indication of post-growth treatment.  
This Laboratory Grown Diamond was created by High Pressure High Temperature (HPHT) growth process.