

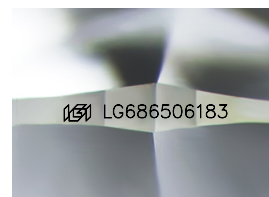
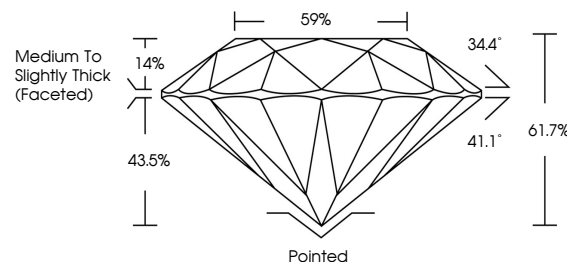


ELECTRONIC COPY

LABORATORY GROWN DIAMOND REPORT

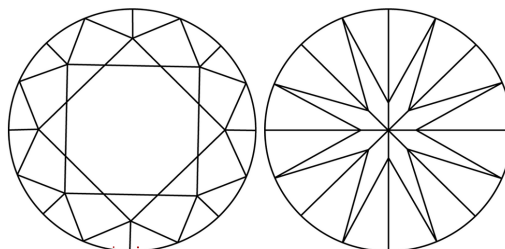
LG686506183
Report verification at lgi.org

PROPORTIONS



Sample Image Used

CLARITY CHARACTERISTICS



KEY TO SYMBOLS

Red symbols indicate internal characteristics.
Green symbols indicate external characteristics.

COLOR

D E F G H I J Faint Very Light Light

CLARITY

IF WS¹⁻² VS¹⁻² SI¹⁻² |¹⁻³

Internally Flawless	Very Very Slightly Included	Very Slightly Included	Slightly Included	Included
------------------------	--------------------------------	---------------------------	----------------------	----------



© IGI 2020, International Gemological Institute

FD - 10 20

www.igi.org

LABORATORY GROWN DIAMOND REPORT



March 4, 2025

IGI Report Number **LG686506183**Description **LABORATORY GROWN DIAMOND**Shape and Cutting Style **ROUND BRILLIANT**

Measurements 6.53 - 6.58 X 4.05 MM

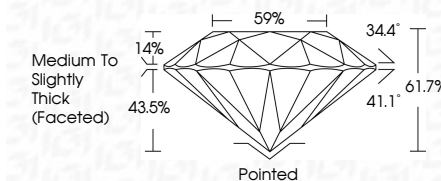
GRADING RESULTS

Carat Weight 1.07 CARAT

Color Grade D

Clarity Grade WS 1

Cut Grade **IDEAL**



ADDITIONAL GRADING INFORMATION

Polish **EXCELLENT**Symmetry **EXCELLENT**Fluorescence **NONE**Inscription(s)  LG686506183

Comments: As Grown - No indication of post-growth treatment.

This Laboratory Grown Diamond was created by High Pressure High Temperature (HPHT) growth process.

Type II



March 4, 2025	GI Report No LG56500183	
ROUND BRILLIANT		
5.53 - 4.59 X 4.05 MM		
Carat Weight	1.07 CARAT	
Color Grade	D	
Clarity Grade	VVS 1	
Cut Grade	IDEAL	
Depth	61.7%	
Table	Medium To Slightly Thick (Faceted)	
Girdle	65%	
Culet	Pointed	
Polish	EXCELLENT	
Symmetry	EXCELLENT	
Fluorescence	NONE	
Inscriptions(s)	691 LG56500183	
Comments:	No indication of post-growth as grown - No indication of post-growth treatment.	
Notes:	This Laboratory Grown Diamond was created by High Pressure High Temperature (HPHT) growth process.	
Type II		