

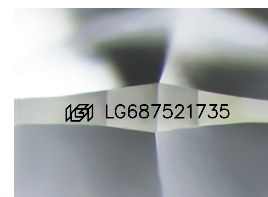
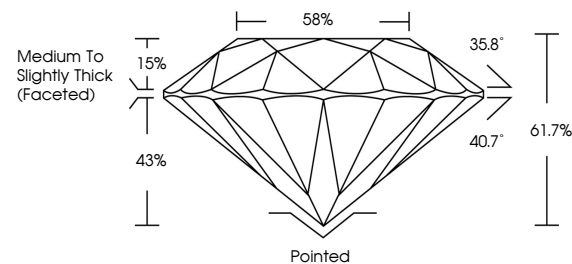


**ELECTRONIC COPY**

## LABORATORY GROWN DIAMOND REPORT

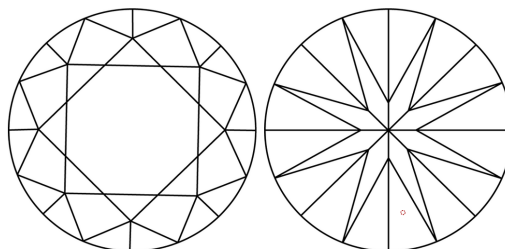
LG687521735  
Report verification at [igi.org](https://igi.org)

## PROPORTIONS



Sample Image Used

## CLARITY CHARACTERISTICS



### KEY TO SYMBOLS

Red symbols indicate internal characteristics.  
Green symbols indicate external characteristics.

## COLOR

D E F G H I J Faint Very Light Light

## CLARITY

IF WS<sup>1-2</sup> VS<sup>1-2</sup> SI<sup>1-2</sup> |<sup>1-3</sup>

Internally Flawless	Very Very Slightly Included	Very Slightly Included	Slightly Included	Included
------------------------	--------------------------------	---------------------------	----------------------	----------



© IGI 2020, International Gemological Institute

FD - 10 20

**www.igi.org**

## LABORATORY GROWN DIAMOND REPORT



March 7, 2025

IGI Report Number **LG687521735**Description **LABORATORY GROWN DIAMOND**Shape and Cutting Style **ROUND BRILLIANT**

Measurements 6.40 - 6.44 X 3.97 MM

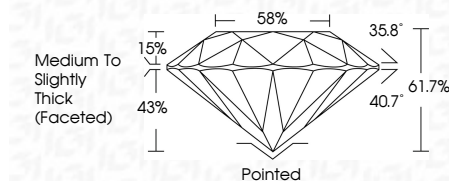
## GRADING RESULTS

Carat Weight 1.02 CARAT

Color Grade	D
-------------	---

Clarity Grade **VVS 1**

Cut Grade **IDEAL**



### ADDITIONAL GRADING INFORMATION

Polish **EXCELLENT**Symmetry **EXCELLENT**Fluorescence **NONE**Inscription(s)  LG687521735

Comments: As Grown - No indication of post-growth treatment.

This Laboratory Grown Diamond was created by High Pressure High Temperature (HPHT) growth process.  
Type II



March 7, 2025	GI Report No US687521735	
ROUND BRILLIANT		
4.40 - 4.44 X 3.97 MM	1.02 CARAT	
Color: Color	D	
Clarity: Grade	VVS 1	
Cut: Grade	IDEAL	
Depth: Table	61.7%	
Girdle: Grade	66%	
Culet: Polish	Medium to Slightly Thick (Faceted)	
Symmetry: Fluorescence	Excellent	
Inclusions(6)	NONE	
Comments:	(68) US687521735	
As Grown - No indication of post-growth treatment		
This Laboratory Grown Diamond was created by High Pressure High Temperature (HPHT) growth process.		
Type IIa		