



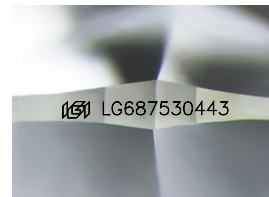
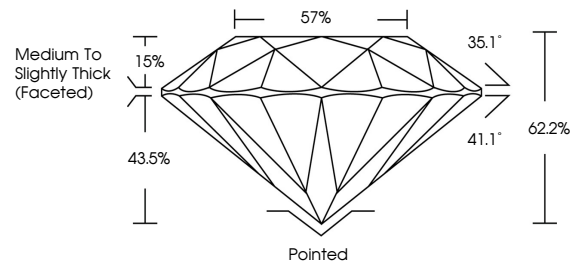
**INTERNATIONAL  
GEMOLOGICAL  
INSTITUTE**

**ELECTRONIC COPY**

## LABORATORY GROWN DIAMOND REPORT

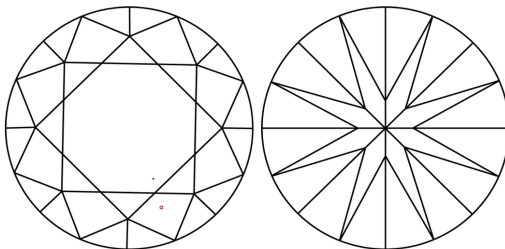
LG687530443  
Report verification at [igi.org](https://igi.org)

## PROPORTIONS



Sample Image Used

## CLARITY CHARACTERISTICS



## KEY TO SYMBOLS

Red symbols indicate internal characteristics.  
Green symbols indicate external characteristics.

**COLOR**

D E F G H I J Faint Very Light Light

## CLARITY

IF                      WS<sup>1-2</sup>                      VS<sup>1-2</sup>                      SI<sup>1-2</sup>                      |<sup>1-3</sup>

Internally Flawless	Very Very Slightly Included	Very Slightly Included	Slightly Included	Included
------------------------	--------------------------------	---------------------------	----------------------	----------



© IGI 2020, International Gemological Institute

FD - 10 20

**www.igi.org**

THIS DOCUMENT WAS PRODUCED WITH THE FOLLOWING SECURITY MEASURES: SPECIAL DOCUMENT PAPER, INK SCREENS, WATERMARK, BACKGROUND DESIGNS, HOLOGRAM AND OTHER SECURITY FEATURES NOT LISTED AND DO EXCEED DOCUMENT SECURITY INDUSTRY GUIDELINES

## LABORATORY GROWN DIAMOND REPORT



March 23, 2025

IGI Report Number **LG687530443**

Description	LABORATORY GROWN DIAMOND
-------------	--------------------------

Shape and Cutting Style **ROUND BRILLIANT**

Measurements	7.88 - 7.92 X 4.91 MM
--------------	-----------------------

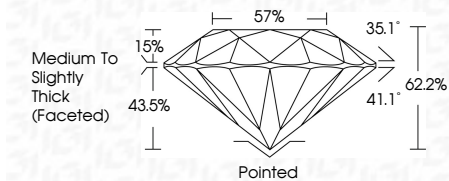
## GRADING RESULTS

Carat Weight **1.88 CARAT**

Color Grade	F
-------------	---

Clarity Grade VS 2

Cut Grade **IDEAL**



### ADDITIONAL GRADING INFORMATION

Polish **EXCELLENT**Symmetry **EXCELLENT**Fluorescence **NONE**Inscription(s)  LG68753044

Comments: This Laboratory Grown Diamond was created by Chemical Vapor Deposition (CVD) growth process.  
Type IIa



IG

March 23, 2025	1.88 CARAT	VS 2	<p>Medium to Slightly Thick Faceted</p>	Pointed	<p>681 LG56753043</p>
IGI Report No LG56753043	Color Grade	IDEAL		EXCELLENT	
ROUND BRILLIANT	Carat Weight	62.2%		EXCELLENT	
	Clarity Grade	57%		NONE	
	Cut Grade				
	Depth				
	Table				
	Girdle				
	Culet				
	Poish				
	Symmetry				
	Fluorescence				
	Inscriptions(s)				
<p>Comments: The Laboratory Grown Diamond was created by Chemical Vapor Deposition (CVD) growth process. Type Iia</p>					