



**INTERNATIONAL  
GEMOLOGICAL  
INSTITUTE**

**ELECTRONIC COPY**

LG687564035  
Report verification at [igi.org](https://igi.org)

LABORATORY GROWN DIAMOND REPORT



March 7, 2025

IGI Report Number **LG687564035**Description **LABORATORY GROWN DIAMOND**Shape and Cutting Style **ROUND BRILLIANT**

Measurements 9.11 - 9.13 X 5.47 MM

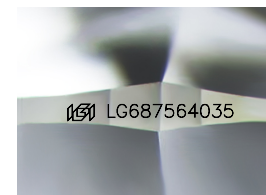
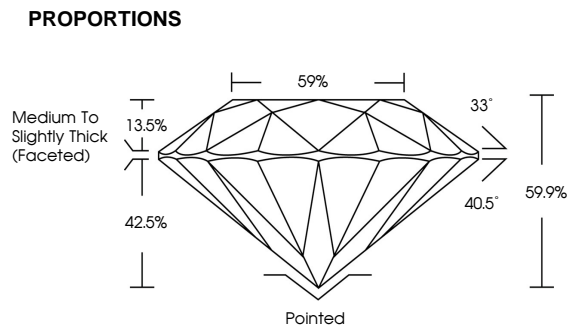
## GRADING RESULTS

Carat Weight 2.82 CARATS

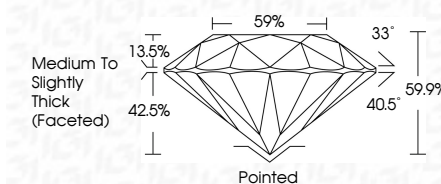
Color Grade

Clarity Grade VS 2

Cut Grade **IDEAL**



Sample Image Used



## COLOR

D E F G H I J Faint Very Light Light

## CLARITY

IF      WS<sup>1-2</sup>      VS<sup>1-2</sup>      SI<sup>1-2</sup>      |<sup>1-3</sup>

Internally Flawless	Very Very Slightly Included	Very Slightly Included	Slightly Included	Included
------------------------	--------------------------------	---------------------------	----------------------	----------



© IGI 2020, International Gemmological Institute

FD - 10 20

**www.igi.org**



March 7, 2025	GI Report No. LG5875640035	ROUND BRILLIANT	2.62 CARATS	F	VS 2	IDEAL	59.5%	59%	Medium to Slightly Thick (focused)	Pointed	EXCELLENT	EXCELLENT	NONE	1691 LG5875640035	Comments: The Laboratory Grown Diamond was analyzed by Chemical Vapor Deposition (CVD) growth process. type IIG
		11.11 - 9.13 X 5.47 MM													
			Carat Weight	Color Grade	Clarity Grade	Cut Grade	Depth	Table	Girdle	Culet	Polish	Symmetry	Fluorescence	Inscriptions(s)	