



**INTERNATIONAL
GEMOLOGICAL
INSTITUTE**

ELECTRONIC COPY

LG687564039
Report verification at igi.org

LABORATORY GROWN DIAMOND REPORT



March 7, 2025

IGI Report Number **LG687564039**

Description	LABORATORY GROWN DIAMOND
-------------	--------------------------

Shape and Cutting Style **ROUND BRILLIANT**

Measurements 9.21 - 9.25 X 5.52 MM

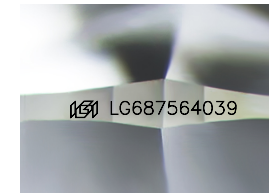
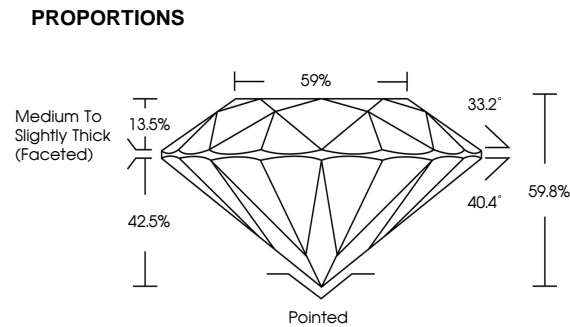
GRADING RESULTS

Carat Weight **2.92 CARATS**

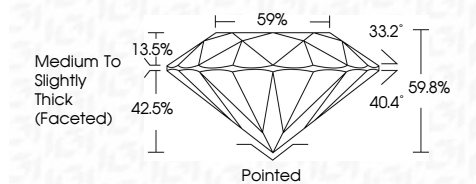
Color Grade	F
-------------	---

Clarity Grade VS 1

Cut Grade **IDEAL**



Sample Image Used



COLOR

D E F G H I J Faint Very Light Light

CLARITY

IF WS¹⁻² VS¹⁻² SI¹⁻² |¹⁻³

Internally Flawless	Very Very Slightly Included	Very Slightly Included	Slightly Included	Included
------------------------	--------------------------------	---------------------------	----------------------	----------



© IGI 2020, International Gemological Institute

FD - 10 20

www.igi.org



THIS DOCUMENT WAS PRODUCED WITH THE FOLLOWING SECURITY MEASURES: SPECIAL DOCUMENT PAPER, INK SCREENS, WATERMARK, BACKGROUND DESIGNS, HOLOGRAM AND OTHER SECURITY FEATURES NOT LISTED AND DO EXCEED DOCUMENT SECURITY INDUSTRY GUIDELINES



March 7, 2025	Carat Weight	2.92 CARATS
GI Report No. LG687564039	Color Grade	F
ROUND BRILLIANT	Clarity Grade	VS 1
221 - 9.25 X 5.62 MM	Clarity Grade	IDEAL
	Depth	59.6%
	Table	59%
	Grade	Medium To Slightly Thick (rounded)
	Culet	Pointed
	Polish	EXCELLENT
	Symmetry	EXCELLENT
	Fluorescence	NONE
	Inscription(s)	lg687564039
	Comments:	This Laboratory Grown Diamond was created by Chemical Vapor Deposition (CVD) growth process.
	Type IIA	