

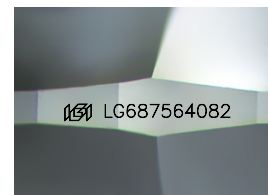
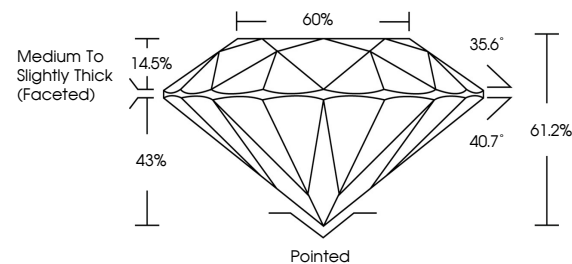


**ELECTRONIC COPY**

## LABORATORY GROWN DIAMOND REPORT

LG687564082  
Report verification at [igi.org](https://igi.org)

## PROPORTIONS



Sample Image Used

## COLOR

D E F G H I J Faint Very Light Light

## CLARITY

IF WS<sup>1-2</sup> VS<sup>1-2</sup> SI<sup>1-2</sup> |<sup>1-3</sup>

Internally Flawless	Very Very Slightly Included	Very Slightly Included	Slightly Included	Included
------------------------	--------------------------------	---------------------------	----------------------	----------



© IGI 2020, International Gemological Institute

FD - 10 20

**www.igi.org**

## LABORATORY GROWN DIAMOND REPORT



February 27, 2025

IGI Report Number **LG687564082**Description **LABORATORY GROWN DIAMOND**Shape and Cutting Style **ROUND BRILLIANT**

Measurements 8.87 - 8.93 X 5.46 MM

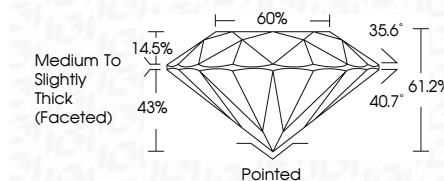
## GRADING RESULTS

Carat Weight **2.70 CARATS**

Color Grade

Clarity Grade VS 1

Cut Grade **IDEAL**



### ADDITIONAL GRADING INFORMATION

Polish **EXCELLENT**Symmetry **EXCELLENT**Fluorescence **NONE**Inscription(s)  LG687564082

Comments: This Laboratory Grown Diamond was created by Chemical Vapor Deposition (CVD) growth process.  
Type IIa



February 27, 2005	2.70 CARATS		VS 1	Pointed EXCELLENT EXCELLENT NONE IGI LG60754082
GI Report No. LG60754082	F		IDEAL	
ROUND BRILLIANT			61.2%	
			60%	
			Medium to Slightly Thick (scored)	
4.87 - 6.93 X 5.46 MM				
Carat Weight				
Color Grade				
Clarity Grade				
Cut Grade				
Depth				
Table				
Girdle				
Culet				
Polish				
Symmetry				
Fluorescence				
Inscription(s)				
Comments:				
The Laboratory Grown Diamond was created by Chemical Vapor Deposition (CVD) growth process.				
Type IIA				