



**INTERNATIONAL
GEMOLOGICAL
INSTITUTE**

ELECTRONIC COPY

LG687565238
Report verification at [igi.org](https://www.igi.org)

LABORATORY GROWN DIAMOND REPORT



February 28, 2025

IGI Report Number **LG687565238**

Description	LABORATORY GROWN DIAMOND
-------------	--------------------------

Shape and Cutting Style **PEAR BRILLIANT**

Measurements 10.84 X 7.07 X 4.37 MM

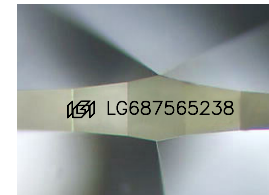
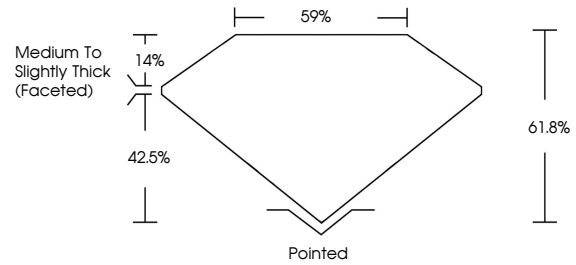
GRADING RESULTS

Carat Weight **2.01 CARATS**

Color Grade	F
-------------	---

Clarity Grade VS 1

PROPORTIONS



Sample Image Used

COLOR

D E F G H I J Faint Very Light Light

CLARITY

IF WS¹⁻² VS¹⁻² SI¹⁻² I¹⁻³

Internally Flawless	Very Very Slightly Included	Very Slightly Included	Slightly Included	Included
------------------------	--------------------------------	---------------------------	----------------------	----------

ADDITIONAL GRADING INFORMATION

Polish **EXCELLENT**Symmetry **EXCELLENT**Fluorescence **NONE**Inscription(s) LG687565238

Comments: This Laboratory Grown Diamond was created by Chemical Vapor Deposition (CVD) growth process.
Type IIa



IGI



© IGI 2020, International Gemological Institute

FD - 10 20



THIS DOCUMENT WAS PRODUCED WITH THE FOLLOWING SECURITY MEASURES: SPECIAL DOCUMENT PAPER, INK SCREENS, WATERMARK BACKGROUND DESIGNS, HOLOGRAM AND OTHER SECURITY FEATURES NOT LISTED AND DO EXCEED DOCUMENT SECURITY INDUSTRY GUIDELINES

www.igi.org



IGI

February 23, 2025	PEAR BRILLIANT		2.01 CARATS	
GI Report No LG687545238	10.64 X 7.07 X 4.37 MM			
Color Grade	Clarity Grade	VS 1		
	Depth	61.9%		
	Table	59%		
	Girdle	Medium to slightly thick (fastest)		
Culet	Polish	Polished		
Symmetry	Fluorescence	EXCELLENT		
Inscription(s)		EXCELLENT		
		NONE		
		1691 LG687545238		

Comments:
 This Laboratory Grown Diamond was
 created by Chemical Vapor Deposition
 (CVD) growth process.
 Type IIa