

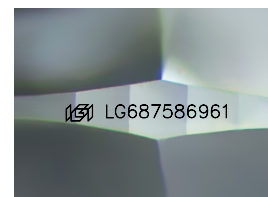
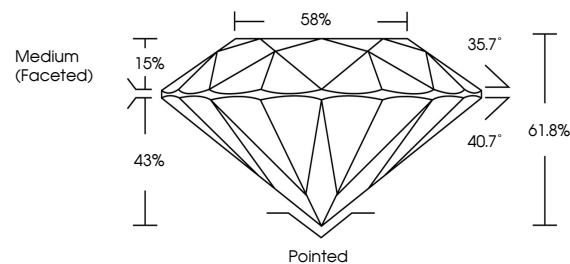


**ELECTRONIC COPY**

## LABORATORY GROWN DIAMOND REPORT

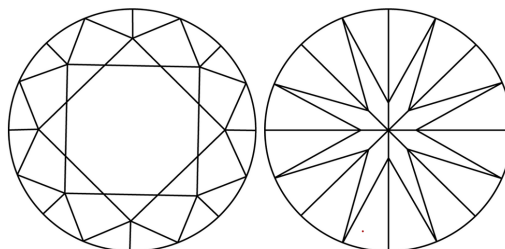
LG687586961  
Report verification at [iqi.org](https://iqi.org)

## PROPORTIONS



Sample Image Used

## CLARITY CHARACTERISTICS



### KEY TO SYMBOLS

Red symbols indicate internal characteristics.  
Green symbols indicate external characteristics.

## COLOR

D E F G H I J Faint Very Light Light

## CLARITY

IF WS<sup>1-2</sup> VS<sup>1-2</sup> SI<sup>1-2</sup> |<sup>1-3</sup>

Internally Flawless	Very Very Slightly Included	Very Slightly Included	Slightly Included	Included
------------------------	--------------------------------	---------------------------	----------------------	----------

## LABORATORY GROWN DIAMOND REPORT



March 1, 2025

IGI Report Number **LG687586961**Description **LABORATORY GROWN DIAMOND**Shape and Cutting Style **ROUND BRILLIANT**

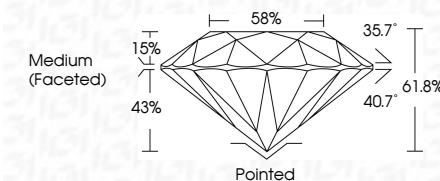
Measurements	10.99 - 11.03 X 6.80 MM
--------------	-------------------------

## GRADING RESULTS

Carat Weight **5.08 CARATS**

Color Grade EClarity Grade VVS 1

Cut Grade **IDEAL**



### ADDITIONAL GRADING INFORMATION

Polish **EXCELLENT**Symmetry **EXCELLENT**Fluorescence **NONE**Inscription(s)  LG687586961

Comments: This Laboratory Grown Diamond was created by Chemical Vapor Deposition (CVD) growth process.

Type IIa



March 1, 2025	GI Report No. LG8755691	5.08 CARATS	Pointed	Commentary:
ROUND	ROUND	5.08 CARATS	EXCELLENT	This Laboratory Grown Diamond was created by Chemical Vapor Deposition (CVD) growth process.
10.09 - 11.03 x 6.80 MM	Color Weight	VS 1	EXCELLENT	
Color Grade	61.8%	IDEAL	NONE	
Clarity Grade	58%	Medium (Faceted)	(#815687556951)	
Car Weight	Medium (Faceted)	Culet		
Color Grade	Clarity Grade	Polish	Symmetry	
Color Grade	Clarity Grade	Fluorescence	Inscription(s)	
Depth	Table			
Girdle				



THIS DOCUMENT WAS PRODUCED WITH THE FOLLOWING SECURITY MEASURES: SPECIAL DOCUMENT PAPER, INK SCREENS, WATERMARK, BACKGROUND DESIGNS, HOLOGRAM AND OTHER SECURITY FEATURES NOT LISTED AND DO EXCEED DOCUMENT SECURITY INDUSTRY GUIDELINES