

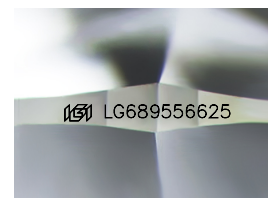
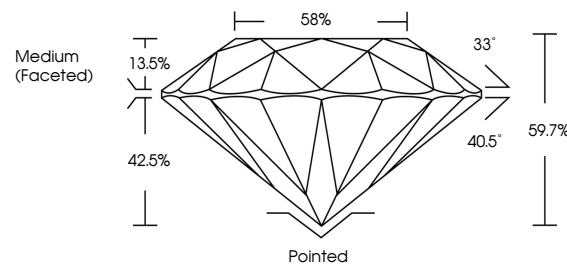


ELECTRONIC COPY

LABORATORY GROWN DIAMOND REPORT

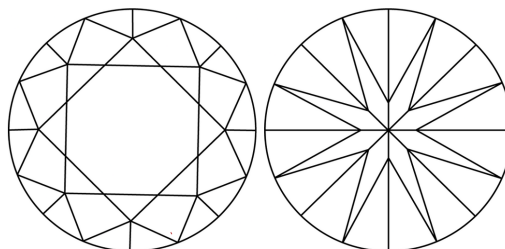
LG689556625
Report verification at igi.org

PROPORTIONS



Sample Image Used

CLARITY CHARACTERISTICS



KEY TO SYMBOLS

Red symbols indicate internal characteristics.
Green symbols indicate external characteristics.

COLOR

D E F G H I J Faint Very Light Light

CLARITY

IF WS¹⁻² VS¹⁻² S¹⁻² |¹⁻³

Internally Flawless	Very Very Slightly Included	Very Slightly Included	Slightly Included	Included
------------------------	--------------------------------	---------------------------	----------------------	----------



© IGI 2020, International Gemological Institute

FD - 10 20

www.igi.org

LABORATORY GROWN DIAMOND REPORT



March 15, 2025

IGI Report Number **LG689556625**Description **LABORATORY GROWN DIAMOND**Shape and Cutting Style **ROUND BRILLIANT**

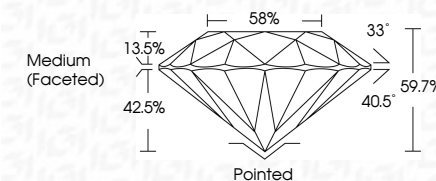
Measurements 6.59 - 6.63 X 3.94 MM

GRADING RESULTS

Carat Weight 1.05 CARAT

Color Grade **E**Clarity Grade **VS 1**

Cut Grade **IDEAL**



ADDITIONAL GRADING INFORMATION

Polish **EXCELLENT**Symmetry **EXCELLENT**Fluorescence NONInscription(s) LG689556625

Comments: As Grown - No indication of post-growth treatment.

This Laboratory Grown Diamond was created by High Pressure High Temperature (HPHT) growth process.

Type II



	March 15, 2026
	G Report No. LG89656625
	ROUND BRILLIANT
	LG# 659 - 4.63 X 3.94 MM
Carat Weight	1.05 CARAT
Color Grade	E
Clarity Grade	VVS 1
Cut Grade	IDEAL
Depth	59.7%
Table	58%
Girdle	Medium Faceted
Culet	Poined
Polish	EXCELLENT
Symmetry	EXCELLENT
Fluorescence	NONE
Inscription(s)	lg# LG89656625

Comments:

As Grown - No indication of post-growth treatment
This Laboratory Grown Diamond was created by High Pressure High Temperature (HPHT) growth process.
