



**INTERNATIONAL
GEMOLOGICAL
INSTITUTE**

ELECTRONIC COPY

LG689584198
Report verification at igi.org

LABORATORY GROWN DIAMOND REPORT



March 10, 2025

IGI Report Number **LG689584198**

Description	LABORATORY GROWN DIAMOND
-------------	--------------------------

Shape and Cutting Style **ROUND BRILLIANT**

Measurements	7.80 - 7.83 X 4.77 MM
--------------	-----------------------

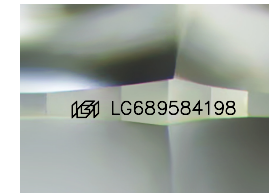
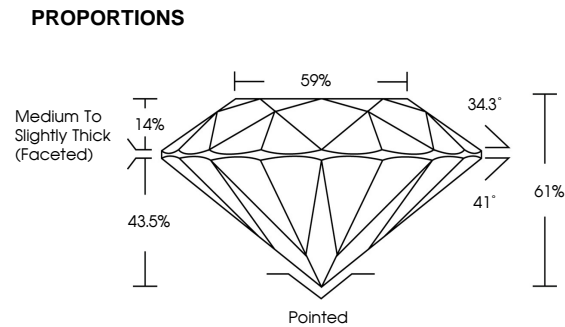
GRADING RESULTS

Carat Weight **1.80 CARAT**

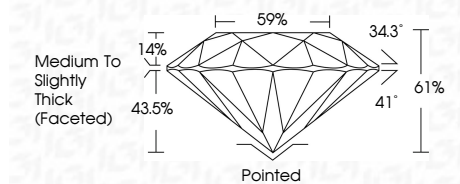
Color Grade	F
-------------	---

Clarity Grade **VS 2**

Cut Grade **IDEAL**



Sample Image Used



COLOR

D E F G H I J Faint Very Light Light

CLARITY

IF WS¹⁻² VS¹⁻² S¹⁻² |¹⁻³

Internally Flawless	Very Very Slightly Included	Very Slightly Included	Slightly Included	Included
------------------------	--------------------------------	---------------------------	----------------------	----------



© IGI 2020, International Gemmological Institute

FD - 10 20

www.igi.org



March 10, 2025
ICI Report No LG689584198
ROUND BRILLIANT

7.80 - 7.83 X 4.77 MM
Carat Weight: 1.80 CARAT

7.60 - 7.63 X 4.77 mm	1.80 CARAT
Carat Weight	
Color Grade	F

Color Grade	F
Clarity Grade	WS2

Clarity Grade	VS 2	IDEAL
Out Grade		

Depth	61%
Table	59%

Table		0976
Girdle	Medium To Slightly Thick (Faceted)	

	Cullet	Pointed	Thick (Faceted)
1			
2			
3			
4			
5			
6			
7			
8			
9			
10			
11			
12			
13			
14			
15			
16			
17			
18			
19			
20			
21			
22			
23			
24			
25			
26			
27			
28			
29			
30			
31			
32			
33			
34			
35			
36			
37			
38			
39			
40			
41			
42			
43			
44			
45			
46			
47			
48			
49			
50			
51			
52			
53			
54			
55			
56			
57			
58			
59			
60			
61			
62			
63			
64			
65			
66			
67			
68			
69			
70			
71			
72			
73			
74			
75			
76			
77			
78			
79			
80			
81			
82			
83			
84			
85			
86			
87			
88			
89			
90			
91			
92			
93			
94			
95			
96			
97			
98			
99			
100			

Culet	Pointed
Polish	EXCELLENT

	EXCELLENT	NONE
Symmetry		
Fluorescence		

Fluorescence	NONE
Inscription(s)	1951 LG689584198

Comments:

This Laboratory Grown Diamond was created by Chemical Vapor Deposition

(CVD) growth process, Type IIa