



**ELECTRONIC COPY**

## LABORATORY GROWN DIAMOND REPORT

|                         |                          |
|-------------------------|--------------------------|
| March 22, 2025          |                          |
| IGI Report Number       | LG689585429              |
| Description             | LABORATORY GROWN DIAMOND |
| Shape and Cutting Style | ROUND BRILLIANT          |
| Measurements            | 6.44 - 6.48 X 3.98 MM    |

## GRADING RESULTS

|               |            |
|---------------|------------|
| Carat Weight  | 1.01 CARAT |
| Color Grade   | D          |
| Clarity Grade | VS 1       |
| Cut Grade     | IDEAL      |

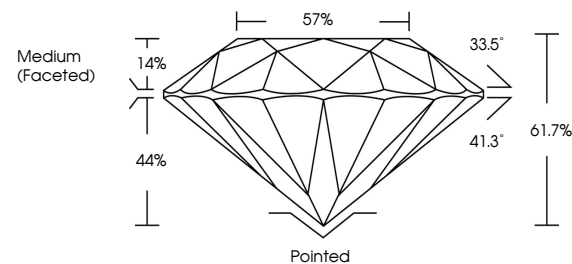
### ADDITIONAL GRADING INFORMATION

|                |   |
|----------------|---|
| Polish         | EXCELLENT   |
| Symmetry       | EXCELLENT   |
| Fluorescence   | NONE  |
| Inscription(s) |  LG689585429 |

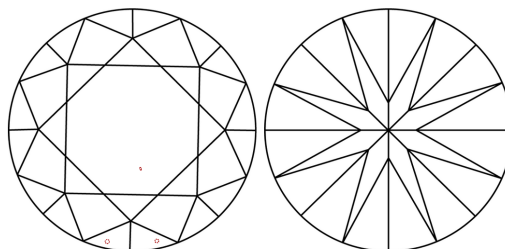
Comments: As Grown - No indication of post-growth treatment.  
This Laboratory Grown Diamond was created by High Pressure High Temperature (HPHT) growth process.  
Type II

LG689585429  
Report verification at [igi.org](https://igi.org)

## PROPORTIONS

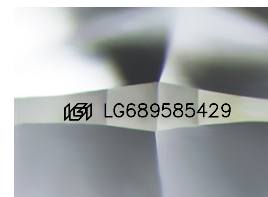


## CLARITY CHARACTERISTICS



## KEY TO SYMBOLS

Red symbols indicate internal characteristics.  
Green symbols indicate external characteristics.



Sample Image Used

## COLOR

D E F G H I J Faint Very Light Light

## CLARITY

IF                      WS<sup>1-2</sup>                      VS<sup>1-2</sup>                      SI<sup>1-2</sup>                      1-3

|                        |                                |                           |                      |          |
|------------------------|--------------------------------|---------------------------|----------------------|----------|
| Internally<br>Flawless | Very Very<br>Slightly Included | Very<br>Slightly Included | Slightly<br>Included | Included |
|------------------------|--------------------------------|---------------------------|----------------------|----------|



© IGI 2020, International Gemological Institute

FD - 10 20

**www.igi.org**

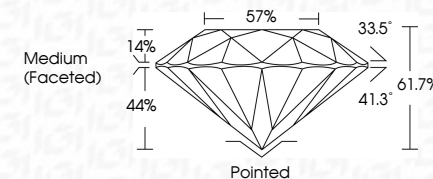
## LABORATORY GROWN DIAMOND REPORT



|                         |                          |
|-------------------------|--------------------------|
| March 22, 2025          |                          |
| IGI Report Number       | LG689585429              |
| Description             | LABORATORY GROWN DIAMOND |
| Shape and Cutting Style | ROUND BRILLIANT          |
| Measurements            | 6.44 - 6.48 X 3.98 MM    |

## GRADING RESULTS

|               |            |
|---------------|------------|
| Carat Weight  | 1.01 CARAT |
| Color Grade   | D          |
| Clarity Grade | VS 1       |
| Cut Grade     | IDEAL      |



### ADDITIONAL GRADING INFORMATION

|                |                |
|----------------|----------------|
| Polish         | EXCELLENT      |
| Symmetry       | EXCELLENT      |
| Fluorescence   | NONE           |
| Inscription(s) | 18 LG689585425 |

Comments: As Grown - No indication of post-growth treatment.  
This Laboratory Grown Diamond was created by High Pressure High Temperature (HPHT) growth process.  
Type II



|                                 |  |  |  |  |  |
|---------------------------------|--|--|--|--|--|
| <b>March 22, 2025</b>           |  |  |  |  |  |
| <b>GJ Report No LG589585429</b> |  |  |  |  |  |
| <b>ROUND BRILLIANT</b>          |  |  |  |  |  |
| <b>GT 1.01 CARAT</b>            |  |  |  |  |  |
| <b>D</b>                        |  |  |  |  |  |
| <b>VSI</b>                      |  |  |  |  |  |
| <b>IDEAL</b>                    |  |  |  |  |  |
| <b>61.7%</b>                    |  |  |  |  |  |
| <b>57%</b>                      |  |  |  |  |  |
| <b>Medium Faceted</b>           |  |  |  |  |  |
| <b>Culet</b>                    |  |  |  |  |  |
| <b>Poished</b>                  |  |  |  |  |  |
| <b>EXCELLENT</b>                |  |  |  |  |  |
| <b>EXCELLENT</b>                |  |  |  |  |  |
| <b>NONE</b>                     |  |  |  |  |  |
| <b>ISSUE LG589585429</b>        |  |  |  |  |  |

Comments:

- As Grown - No indication of post-growth treatment.
- This Laboratory Grown Diamond was created by High Pressure High Temperature (HPHT) growth process.