

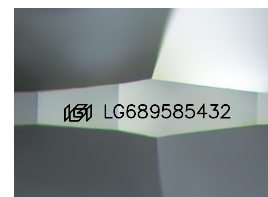
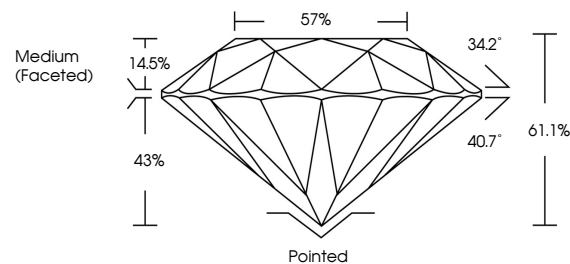


ELECTRONIC COPY

LABORATORY GROWN DIAMOND REPORT

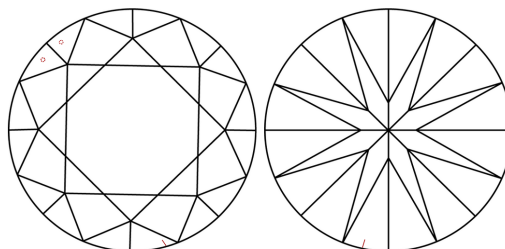
LG689585432
Report verification at igi.org

PROPORTIONS



Sample Image Used

CLARITY CHARACTERISTICS



KEY TO SYMBOLS

Red symbols indicate internal characteristics.
Green symbols indicate external characteristics.

COLOR

D E F G H I J Faint Very Light Light

CLARITY

IF WS¹⁻² VS¹⁻² SI¹⁻² I¹⁻³

Internally Flawless	Very Very Slightly Included	Very Slightly Included	Slightly Included	Included
------------------------	--------------------------------	---------------------------	----------------------	----------

LABORATORY GROWN DIAMOND REPORT



March 22, 2025

IGI Report Number **LG689585432**Description **LABORATORY GROWN DIAMOND**Shape and Cutting Style **ROUND BRILLIANT**

Measurements 6.51 - 6.54 X 3.99 MM

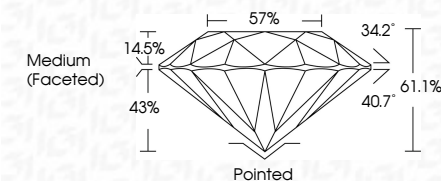
GRADING RESULTS

Carat Weight 1.03 CARAT

Color Grade D

Clarity Grade VS 1

Cut Grade **IDEAL**



ADDITIONAL GRADING INFORMATION

Polish **EXCELLENT**Symmetry **EXCELLENT**Fluorescence **NONE**Inscription(s) LG689585432

Comments: As Grown - No indication of post-growth treatment.

This Laboratory Grown Diamond was created by High Pressure High Temperature (HPHT) growth process.



www.igi.org

© IGI 2020, International Gemological Institute

FD - 10 20



THIS DOCUMENT WAS PRODUCED WITH THE FOLLOWING SECURITY MEASURES: SPECIAL DOCUMENT PAPER, INK SCREENS, WATERMARK, BACKGROUND DESIGNS, HOLOGRAM AND OTHER SECURITY FEATURES NOT LISTED AND DO EXCEED DOCUMENT SECURITY INDUSTRY GUIDELINES

March 22, 2025	IGI Report No. LG5958542	ROUND BRILLIANT	6.51 - 6.54 X 3.99 MM	1.03 CARAT	
	Carat Weight	Color Grade	Clarity Grade	VS 1	
	Cut Grade	Depth	Table	IDEAL	
	Girdle			61.1%	
				57%	
				Medium (Faceted)	
	Culet	Symmetry	Inclusions	Polished	
			Fluorescence	EXCELLENT	
			Response(s)	NONE	
				lg595858432	
Comments:			As Grown - No indication of post-growth treatment.		
			This Laboratory Grown Diamond was created by High Pressure High Temperature (HPHT) growth process.		
			Type II		