



**ELECTRONIC COPY**

## LABORATORY GROWN DIAMOND REPORT

March 21, 2025	
IGI Report Number	LG689585531
Description	LABORATORY GROWN DIAMOND
Shape and Cutting Style	ROUND BRILLIANT
Measurements	6.50 - 6.53 X 4.03 MM

## GRADING RESULTS

Carat Weight	1.04 CARAT
Color Grade	E
Clarity Grade	VVS 2
Cut Grade	IDEAL

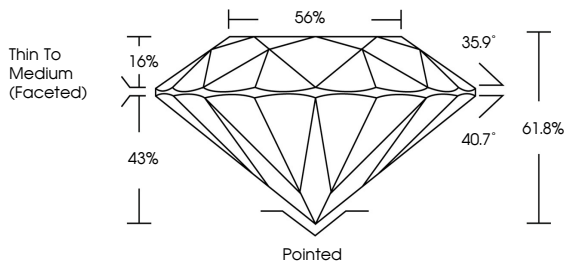
### ADDITIONAL GRADING INFORMATION

Polish	EXCELLENT
Symmetry	EXCELLENT
Fluorescence	NONE
Inscription(s)	 LG689585531

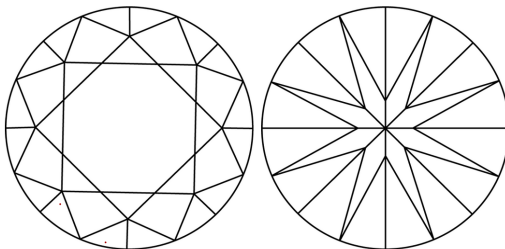
Comments: As Grown - No indication of post-growth treatment.  
This Laboratory Grown Diamond was created by High Pressure High Temperature (HPHT) growth process.  
Type II

LG689585531  
Report verification at [igi.org](https://igi.org)

## PROPORTIONS

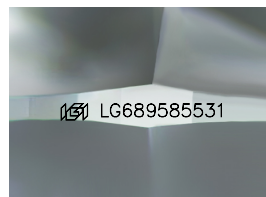


## CLARITY CHARACTERISTICS



## KEY TO SYMBOLS

Red symbols indicate internal characteristics.  
Green symbols indicate external characteristics.



Sample Image Used

## COLOR

D E F G H I J Faint Very Light Light

## CLARITY

IF      WS<sup>1-2</sup>      VS<sup>1-2</sup>      SI<sup>1-2</sup>      |<sup>1-3</sup>

Internally Flawless	Very Very Slightly Included	Very Slightly Included	Slightly Included	Included
------------------------	--------------------------------	---------------------------	----------------------	----------

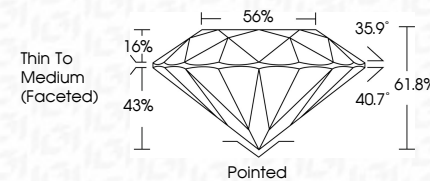
## LABORATORY GROWN DIAMOND REPORT



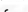
March 21, 2025	
IGI Report Number	LG689585531
Description	LABORATORY GROWN DIAMOND
Shape and Cutting Style	ROUND BRILLIANT
Measurements	6.50 - 6.53 X 4.03 MM

## GRADING RESULTS

Carat Weight	1.04 CARAT
Color Grade	E
Clarity Grade	VVS 2
Cut Grade	IDEAL



### ADDITIONAL GRADING INFORMATION

Polish	EXCELLENT
Symmetry	EXCELLENT
Fluorescence	NONE
Inscription(s)	 LG689585531
Comments: As Grown - No indication of post-growth treatment.	
This Laboratory Grown Diamond was created by High Pressure High Temperature (HPHT) growth process.	
Type II	



© IGI 2020, International Gemological Institute

FD - 10 20

**www.igi.org**



March 21, 2025	IGI Report No. US69695531	ROUND BRILLIANT	1.04 CARAT	VVS 2	IDEAL	61.5%	56%	Thin To Medium (graded)	Pointed	EXCELLENT	EXCELLENT	NONE	IGI US69695531
		6.60 - 6.55 X 4.03 MM											
		Color Weight											
		Color Grade											
		Clarity Grade											
		Cut Grade											
		Depth											
		Table											
		Girdle											
		Culet											
		Polish											
		Symmetry											
		Fluorescence											
		Annotations											

Comments:

As Grown - No indication of post-growth treatment.

The Laboratory's Growth Diagram was taken by High Pressure High Temperature (HPHT) growth process.