

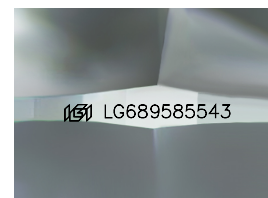
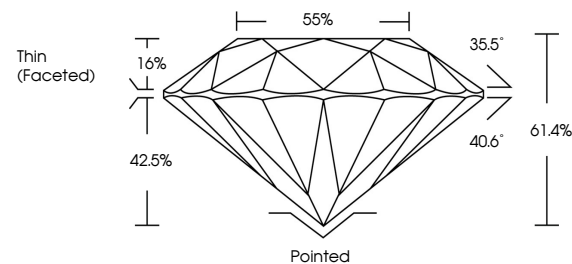


**ELECTRONIC COPY**

## LABORATORY GROWN DIAMOND REPORT

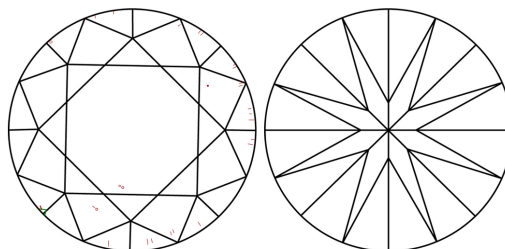
LG689585543  
Report verification at [igi.org](https://igi.org)

## PROPORTIONS



Sample Image Used

## CLARITY CHARACTERISTICS



## KEY TO SYMBOLS

Red symbols indicate internal characteristics.  
Green symbols indicate external characteristics.

## COLOR

D E F G H I J Faint Very Light Light

## CLARITY

IF WS<sup>1-2</sup> VS<sup>1-2</sup> S<sup>1-2</sup> |<sup>1-3</sup>

Internally Flawless	Very Very Slightly Included	Very Slightly Included	Slightly Included	Included
------------------------	--------------------------------	---------------------------	----------------------	----------



© IGI 2020, International Gemological Institute

FD - 10 20

**www.igi.org**

## LABORATORY GROWN DIAMOND REPORT



March 22, 2025

IGI Report Number **LG689585543**Description **LABORATORY GROWN DIAMOND**Shape and Cutting Style **ROUND BRILLIANT**

Measurements 6.44 - 6.52 X 3.97 MM

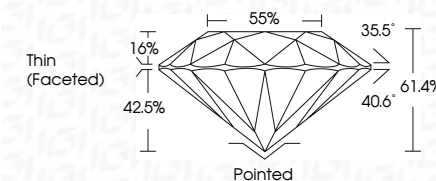
## GRADING RESULTS

Carat Weight 1.00 CARAT

Color Grade D

Clarity Grade VS 1

Cut Grade **IDEAL**



### ADDITIONAL GRADING INFORMATION

Polish **EXCELLENT**Symmetry **EXCELLENT**Fluorescence NONInscription(s)  LG689585543

Comments: As Grown - No indication of post-growth treatment.

This Laboratory Grown Diamond was created by High Pressure High Temperature (HPHT) growth process.

Type II



March 22, 2026	1.00 CARAT
IGI Report No. LG49695543	D
ROUND BRILLIANT	VS 1
	IDEAL
	61.4%
	55%
	Thin (Faceted)
	Polished
	EXCELLENT
	EXCELLENT
	NONE
	IGI LG49695543
	Comments:
	As Grown - No indication of post-growth
	enhancement.
	This Laboratory Grown Diamond was
	created by High Pressure High
	Temperature (HPHT) growth process.
	Type II