

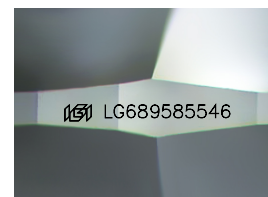
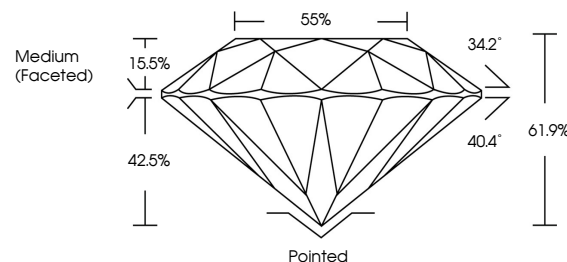


ELECTRONIC COPY

LABORATORY GROWN DIAMOND REPORT

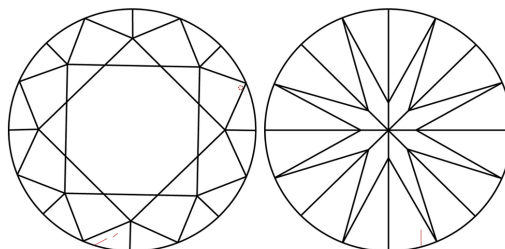
LG689585546
Report verification at igi.org

PROPORTIONS



Sample Image Used

CLARITY CHARACTERISTICS



KEY TO SYMBOLS

Red symbols indicate internal characteristics.
Green symbols indicate external characteristics.

COLOR

D E F G H I J Faint Very Light Light

CLARITY

IF WS¹⁻² VS¹⁻² SI¹⁻² I¹⁻³

Internally Flawless	Very Very Slightly Included	Very Slightly Included	Slightly Included	Included
------------------------	--------------------------------	---------------------------	----------------------	----------



© IGI 2020, International Gemological Institute

FD - 10 20

www.igi.org

LABORATORY GROWN DIAMOND REPORT



March 22, 2025

IGI Report Number **LG689585546**Description **LABORATORY GROWN DIAMOND**Shape and Cutting Style **ROUND BRILLIANT**

Measurements	6.39 - 6.41 X 3.96 MM
--------------	-----------------------

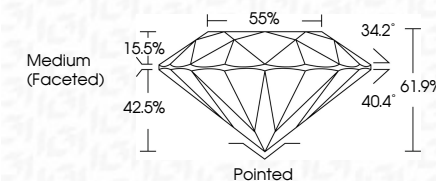
GRADING RESULTS

Carat Weight 1.00 CARAT

Color Grade D

Clarity Grade VS 2

Cut Grade **IDEAL**



ADDITIONAL GRADING INFORMATION

Polish **EXCELLENT**Symmetry **EXCELLENT**Fluorescence NONInscription(s) LG689585546

Comments: As Grown - No indication of post-growth treatment.

This Laboratory Grown Diamond was created by High Pressure High Temperature (HPHT) growth process.

Type II



March 22, 2025	Carat Weight	Color Grade	Clarity Grade	VS 2	1.00 CARAT
Lab Report No. LG249885546	Color Grade	Cut Grade	Depth	IDEAL	D
ROUND BRILLIANT	Weight	Table	Girdle	61.9%	
	3.39 - 4.11 X 3.96 MM			55%	
				Medium (Facet0)	
	Culet	Polish	Symmetry	Excellent	
	Fluorescence	Inscriptions(s)		None	
				#69 LG249885546	

Comments:

As-Grown - No indication of post-growth treatment.
This Laboratory Grown Diamond was created by High Pressure High Temperature (HPHT) growth process.
Type I