

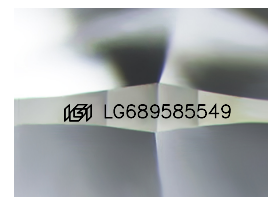
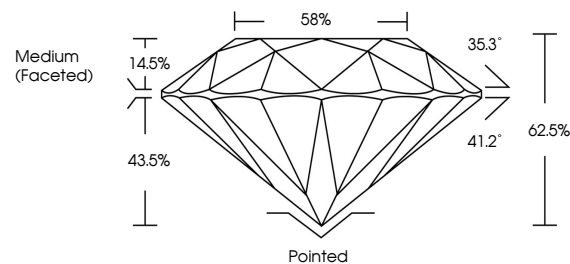


ELECTRONIC COPY

LABORATORY GROWN DIAMOND REPORT

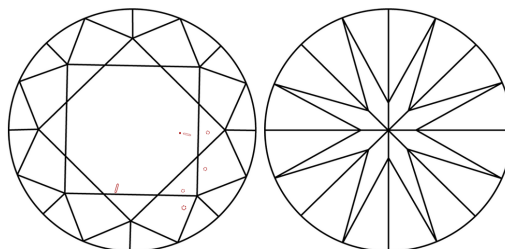
LG689585549
Report verification at igi.org

PROPORTIONS



Sample Image Used

CLARITY CHARACTERISTICS



KEY TO SYMBOLS

Red symbols indicate internal characteristics.
Green symbols indicate external characteristics.

COLOR

D E F G H I J Faint Very Light Light

CLARITY

IF WS¹⁻² VS¹⁻² SI¹⁻² I¹⁻³

Internally Flawless	Very Very Slightly Included	Very Slightly Included	Slightly Included	Included
------------------------	--------------------------------	---------------------------	----------------------	----------



© IGI 2020, International Gemological Institute

FD - 10 20

www.igi.org

LABORATORY GROWN DIAMOND REPORT



March 22, 2025

IGI Report Number **LG689585549**Description **LABORATORY GROWN DIAMOND**Shape and Cutting Style **ROUND BRILLIANT**

Measurements 6.43 - 6.48 X 4.03 MM

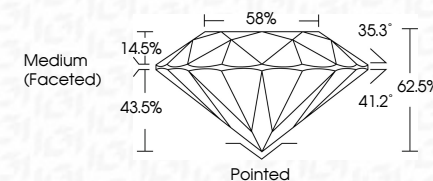
GRADING RESULTS

Carat Weight **1.04 CARAT**

Color Grade	D
-------------	---

Clarity Grade VS 1

Cut Grade **IDEAL**



ADDITIONAL GRADING INFORMATION

Polish **EXCELLENT**Symmetry **EXCELLENT**Fluorescence **NONE**Inscription(s) LG689585549

Comments: As Grown - No indication of post-growth treatment.

This Laboratory Grown Diamond was created by High Pressure High Temperature (HPHT) growth process.
Type II



March 22, 2026	GI Report No. LG5985549	1.04 CARAT
ROUND BRILLIANT		D
Color Grade	VS 1	IDEAL
Carat Weight	Clarity Grade	62.5%
4.49 - 4.48 X 0.03 MM	Cut Grade	85%
	Depth	Medium (Faceted)
	Table	
	Girdle	
	Culet	Pointed
	Polish	EXCELLENT
	Symmetry	EXCELLENT
	Fluorescence	NONE
	Inclusions	#69 LG5985549
Comments:		
As Grown - No indication of post-growth treatment.		
This Laboratory Growth Diamond was created by High Pressure High Temperature (HPHT) growth process.		
Type II		