

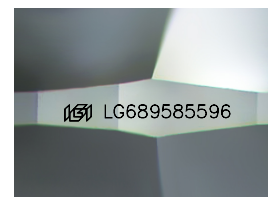
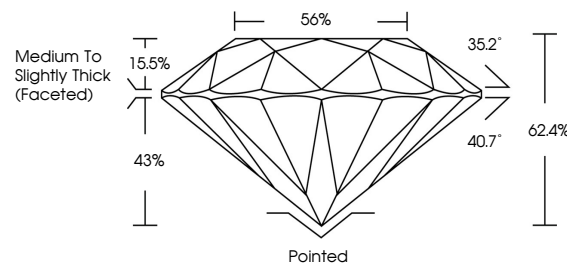


**ELECTRONIC COPY**

## LABORATORY GROWN DIAMOND REPORT

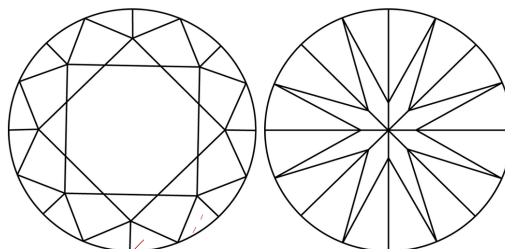
LG689585596  
Report verification at [lgi.org](https://lgi.org)

## PROPORTIONS



Sample Image Used

## CLARITY CHARACTERISTICS



### KEY TO SYMBOLS

Red symbols indicate internal characteristics.  
Green symbols indicate external characteristics.

## COLOR

D E F G H I J Faint Very Light Light

## CLARITY

IF WS<sup>1-2</sup> VS<sup>1-2</sup> SI<sup>1-2</sup> |<sup>1-3</sup>

Internally Flawless	Very Very Slightly Included	Very Slightly Included	Slightly Included	Included
------------------------	--------------------------------	---------------------------	----------------------	----------



© IGI 2020, International Gemological Institute

FD - 10 20

**www.igi.org**

## LABORATORY GROWN DIAMOND REPORT



March 22, 2025

IGI Report Number **LG689585596**Description **LABORATORY GROWN DIAMOND**Shape and Cutting Style **ROUND BRILLIANT**

Measurements 6.44 - 6.48 X 4.03 MM

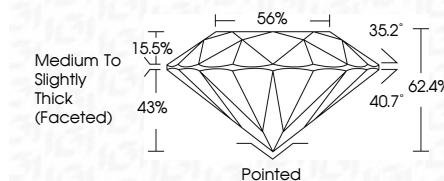
## GRADING RESULTS

Carat Weight 1.03 CARAT

Color Grade D

Clarity Grade VS 1

Cut Grade **IDEAL**



### ADDITIONAL GRADING INFORMATION

Polish **EXCELLENT**Symmetry **EXCELLENT**

Fluorescence NON

Inscription(s)  LG689585596

Comments: As Grown - No indication of post-growth treatment.

This Laboratory Grown Diamond was created by High Pressure High Temperature (HPHT) growth process.

Type II



March 22, 2025	1.03 CARAT
GI Report No. LG49085596	D
ROUND BRILLIANT	Vs 1
	IDEAL
	62.4%
	56%
	Medium to Slightly Thick (Faceted)
	Pointed
	EXCELLENT
	EXCELLENT
	NONE
	lg9 LG49085596
Carat Weight	Comments:
Color Grade	No Growth - No indication of post-growth
Clarity Grade	Lab-Grown
Cut Grade	The Laboratory Grown Diamond was
Depth	created by High Pressure High
Table	temperature (HPHT) growth process.
Girdle	Type II
Culet	
Polish	
Symmetry	
Fluorescence	
Inscriptions(s)	