

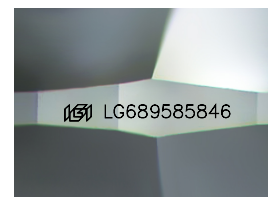
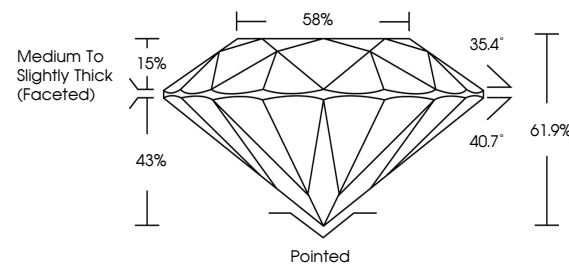


ELECTRONIC COPY

LABORATORY GROWN DIAMOND REPORT

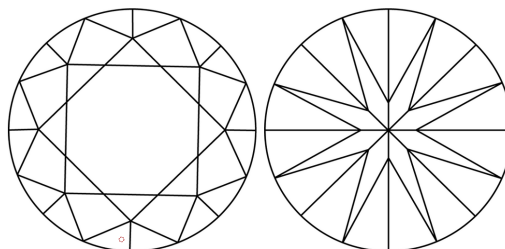
LG689585846
Report verification at igi.org

PROPORTIONS



Sample Image Used

CLARITY CHARACTERISTICS



KEY TO SYMBOLS

Red symbols indicate internal characteristics.
Green symbols indicate external characteristics.

COLOR

D E F G H I J Faint Very Light Light

CLARITY

IF WS¹⁻² VS¹⁻² SI¹⁻² |¹⁻³

Internally Flawless	Very Very Slightly Included	Very Slightly Included	Slightly Included	Included
------------------------	--------------------------------	---------------------------	----------------------	----------

LABORATORY GROWN DIAMOND REPORT



March 22, 2025

IGI Report Number **LG689585846**Description **LABORATORY GROWN DIAMOND**Shape and Cutting Style **ROUND BRILLIANT**

Measurements 6.38 - 6.43 X 3.97 MM

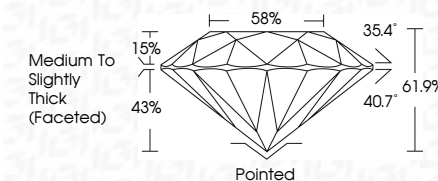
GRADING RESULTS

Carat Weight 1.01 CARAT

Color Grade D

Clarity Grade **VVS 2**

Cut Grade **IDEAL**



ADDITIONAL GRADING INFORMATION

Polish EXCELLENT

Symmetry **EXCELLENT**

Fluorescence NON

Inscription(s)  LG689585846

Comments: As Grown - No indication of post-growth treatment.

This Laboratory Grown Diamond was created by High Pressure High Temperature (HPHT) growth process.

Type II



© IGI 2020, International Gemological Institute

FD - 10 20



THIS DOCUMENT WAS PRODUCED WITH THE FOLLOWING SECURITY MEASURES: SPECIAL DOCUMENT PAPER, INK SCREENS, WATERMARK, BACKGROUND DESIGNS, HOLOGRAM AND OTHER SECURITY FEATURES NOT LISTED AND DO EXCEED DOCUMENT SECURITY INDUSTRY GUIDELINES

www.igi.org

March 22, 2025	Carat Weight	Color Grade	Clarity Grade	Depth	Table	Girdle	Culet	Polish	Symmetry	Fluorescence	Inscription(s)	Comments:
IG Report No. LG496868946	3.38 - 4.43 X 3.97 MM	Color Grade	Clarity Grade	Our Grade	61.9%	Medium to Slightly Thick (Faced)	Pointed	Excellent	Excellent	None	IG# LG496868946	As Grown - No indication of post-growth treatment.
ROUND BRILLIANT												This Laboratory Grown Diamond was created by High Pressure High Temperature (HPHT) growth process.