

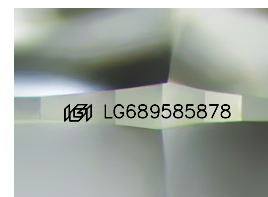
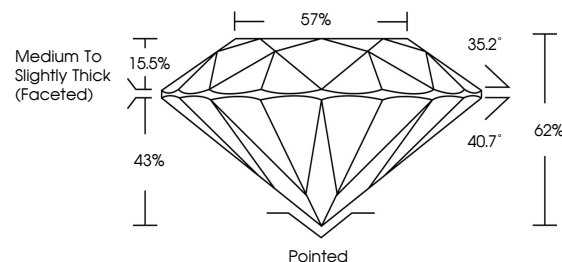


ELECTRONIC COPY

LABORATORY GROWN DIAMOND REPORT

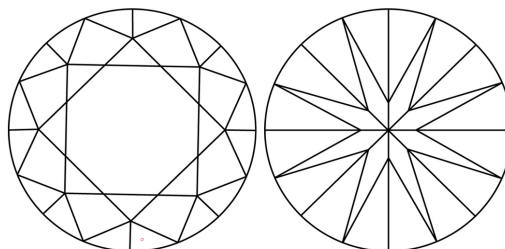
LG689585878
Report verification at lgi.org

PROPORTIONS



Sample Image Used

CLARITY CHARACTERISTICS



KEY TO SYMBOLS

Red symbols indicate internal characteristics.
Green symbols indicate external characteristics.

COLOR

D E F G H I J Faint Very Light Light

CLARITY

IF WS¹⁻² VS¹⁻² SI¹⁻² I¹⁻³

Internally Flawless	Very Very Slightly Included	Very Slightly Included	Slightly Included	Included
------------------------	--------------------------------	---------------------------	----------------------	----------



© IGI 2020, International Gemological Institute

FD - 10 20

www.igi.org

LABORATORY GROWN DIAMOND REPORT



March 23, 2025

IGI Report Number **LG689585878**Description **LABORATORY GROWN DIAMOND**Shape and Cutting Style **ROUND BRILLIANT**

Measurements 6.50 - 6.54 X 4.05 MM

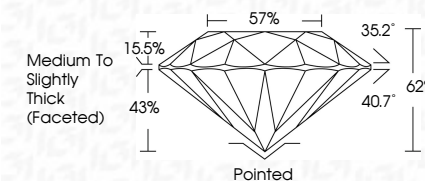
GRADING RESULTS

Carat Weight 1.06 CARAT

Color Grade E

Clarity Grade WS 1

Cut Grade **IDEAL**



ADDITIONAL GRADING INFORMATION

Polish EXCELLENT

Symmetry **EXCELLENT**Fluorescence **NONE**Inscription(s) LG689585878

Comments: As Grown - No indication of post-growth treatment.

This Laboratory Grown Diamond was created by High Pressure High Temperature (HPHT) growth process.

Type II



March 23, 2025	1.06 CARAT	
GJ Report No. LG9695878	E	
ROUND BRILLIANT	VVS 1	
	IDEAL	
	62%	
	57%	
	Medium to Slightly Thick (faceted)	
	Pointed	
	EXCELLENT	
	EXCELLENT	
	NONE	
	161 LG9695878	

Comments:

No indication of post-growth treatment.

This Laboratory Grown Diamond was created by High Pressure High temperature (HPHT) growth process.

Type I