

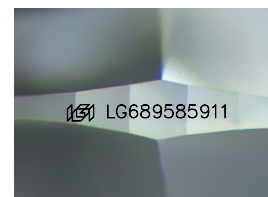
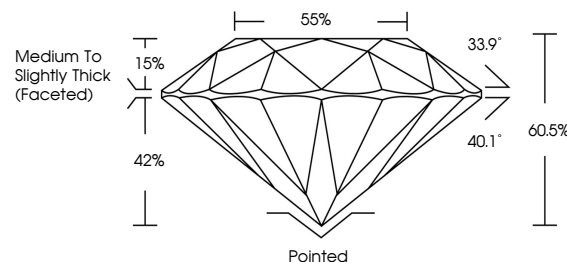


ELECTRONIC COPY

LABORATORY GROWN DIAMOND REPORT

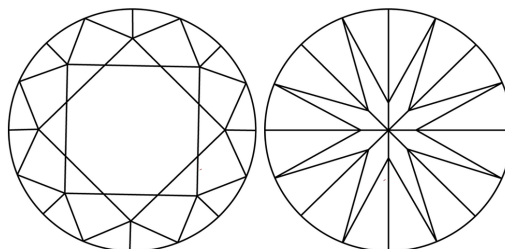
LG689585911
Report verification at lgi.org

PROPORTIONS



Sample Image Used

CLARITY CHARACTERISTICS



KEY TO SYMBOLS

Red symbols indicate internal characteristics.
Green symbols indicate external characteristics.

COLOR

D E F G H I J Faint Very Light Light

CLARITY

IF WS¹⁻² VS¹⁻² SI¹⁻² |¹⁻³

Internally Flawless	Very Very Slightly Included	Very Slightly Included	Slightly Included	Included
------------------------	--------------------------------	---------------------------	----------------------	----------



© IGI 2020, International Gemological Institute

FD - 10 20

www.igi.org

LABORATORY GROWN DIAMOND REPORT



March 22, 2025

IGI Report Number **LG689585911**Description **LABORATORY GROWN DIAMOND**Shape and Cutting Style **ROUND BRILLIANT**

Measurements 6.66 - 6.68 X 4.03 MM

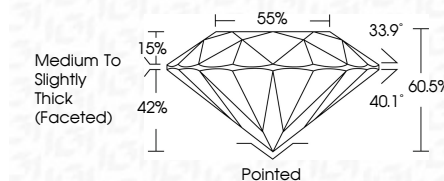
GRADING RESULTS

Carat Weight 1.08 CARAT

Color Grade E

Clarity Grade **VS 2**

Cut Grade **IDEAL**



ADDITIONAL GRADING INFORMATION

Polish **EXCELLENT**Symmetry **EXCELLENT**Fluorescence **NONE**Inscription(s) LG689585911

Comments: As Grown - No indication of post-growth treatment.

This Laboratory Grown Diamond was created by High Pressure High Temperature (HPHT) growth process.

Type II



March 22, 2026	Report No. LG49859911	ROUND BRILLIANT	G	6.56 - 6.68 X 4.03 MM	Color Grade	Clarity Grade	Cut Grade	VVS 2	IDEAL	50.5%	Medium to Slightly Thick Faceting	Poined	EXCELLENT	EXCELLENT	NONE	6891 LG49859911	Comments:
																	As Grown - No indication of post-growth treatment.
																	This Laboratory Grown Diamond was created by High Pressure High Temperature (HPHT) growth process.
																	Please refer to the comments section for more information.