

ELECTRONIC COPY

LABORATORY GROWN DIAMOND REPORT

March 21, 2025	
IGI Report Number	LG690508851
Description	LABORATORY GROWN DIAMOND
Shape and Cutting Style	ROUND BRILLIANT
Measurements	6.52 - 6.56 X 3.99 MM

GRADING RESULTS

Carat Weight	1.04 CARAT
Color Grade	D
Clarity Grade	VS 1
Cut Grade	IDEAL

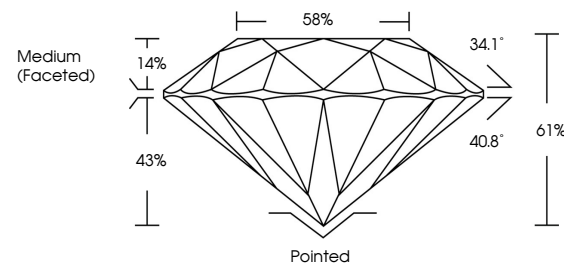
ADDITIONAL GRADING INFORMATION

Polish	EXCELLENT
Symmetry	EXCELLENT
Fluorescence	NONE
Inscription(s)	 LG690508851

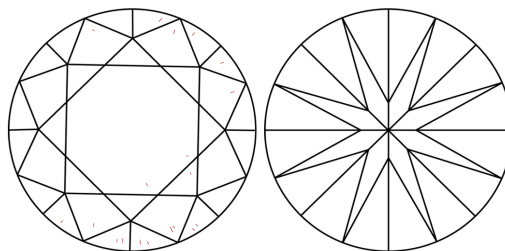
Comments: As Grown - No indication of post-growth treatment.
This Laboratory Grown Diamond was created by High Pressure High Temperature (HPHT) growth process.
Type II

LG690508851
Report verification at igi.org

PROPORTIONS

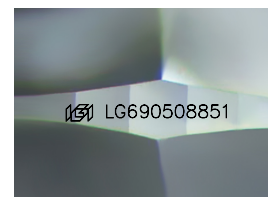


CLARITY CHARACTERISTICS



KEY TO SYMBOLS

Red symbols indicate internal characteristics.
Green symbols indicate external characteristics.



Sample Image Used

COLOR

D E F G H I J Faint Very Light Light

CLARITY

IF WS¹⁻² VS¹⁻² S¹⁻² |¹⁻³

Internally Flawless	Very Very Slightly Included	Very Slightly Included	Slightly Included	Included
------------------------	--------------------------------	---------------------------	----------------------	----------

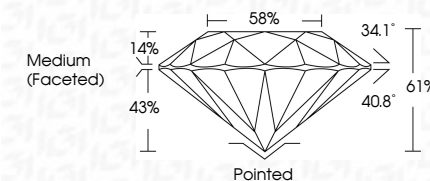
LABORATORY GROWN DIAMOND REPORT




March 21, 2025	
IGI Report Number	LG69050885T
Description	LABORATORY GROWN DIAMOND
Shape and Cutting Style	ROUND BRILLIANT
Measurements	6.52 - 6.56 X 3.99 MM

GRADING RESULTS

Carat Weight	1.04 CARAT
Color Grade	D
Clarity Grade	VS 1
Cut Grade	IDEAL



ADDITIONAL GRADING INFORMATION

Polish	EXCELLENT
Symmetry	EXCELLENT
Fluorescence	NONE
Inscription(s)	 LG690508851
Comments: As Grown - No indication of post-growth treatment.	
This Laboratory Grown Diamond was created by High Pressure High Temperature (HPHT) growth process.	
Type II	



© IGI 2020, International Gemological Institute

FD - 10 20

March 21, 2025	Carat Weight	1.04 CARAT
(G) Report No. LG590508851	Color Grade	D
ROUND BRILLIANT	Clarity Grade	VS 1
	Cut Grade	IDEAL
	Depth	61%
	Table	58%
	Grade	Medium (Faceted)
	Quiet	Pointed
	Polish	EXCELLENT
	Symmetry	EXCELLENT
	Fluorescence	NONE
	Inscriptions (s)	lg590508851
	Comments:	As Given - No indication of post-growth treatment.
		The Laboratory Growth Diamond was created by High Pressure High Temperature (HPHT) growth process.