

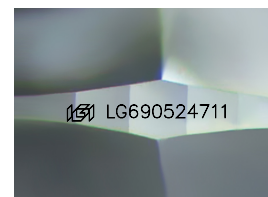
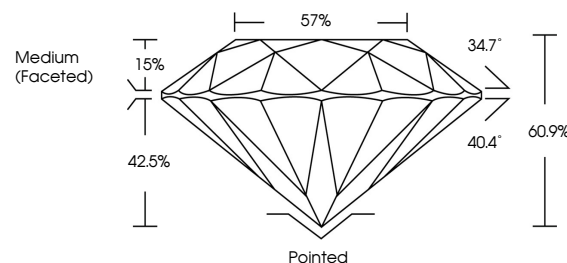


ELECTRONIC COPY

LABORATORY GROWN DIAMOND REPORT

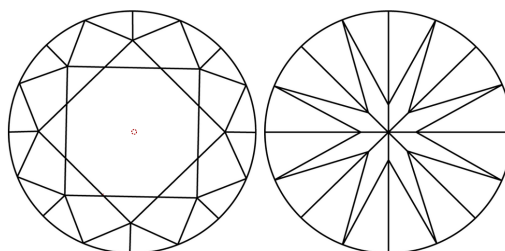
LG690524711
Report verification at [igi.org](https://www.igi.org)

PROPORTIONS



Sample Image Used

CLARITY CHARACTERISTICS



KEY TO SYMBOLS

Red symbols indicate internal characteristics.
Green symbols indicate external characteristics.

COLOR

D E F G H I J Faint Very Light Light

CLARITY

IF WS¹⁻² VS¹⁻² SI¹⁻² I¹⁻³

Internally Flawless	Very Very Slightly Included	Very Slightly Included	Slightly Included	Included
------------------------	--------------------------------	---------------------------	----------------------	----------



© IGI 2020, International Gemological Institute

FD - 10 20

www.igi.org

LABORATORY GROWN DIAMOND REPORT



March 21, 2025

IGI Report Number **LG690524711**Description **LABORATORY GROWN DIAMOND**Shape and Cutting Style **ROUND BRILLIANT**

Measurements 6.59 - 6.61 X 4.02 MM

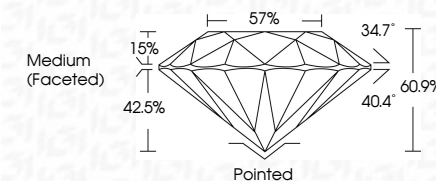
GRADING RESULTS

Carat Weight 1.07 CARAT

Color Grade

Clarity Grade WS 1

Cut Grade **IDEAL**



ADDITIONAL GRADING INFORMATION

Polish **EXCELLENT**Symmetry **EXCELLENT**Fluorescence **NONE**Inscription(s) LG690524711

Comments: As Grown - No indication of post-growth treatment.

This Laboratory Grown Diamond was created by High Pressure High Temperature (HPHT) growth process.

Type II



March 21, 2026	GJ Report No LG95024711	
SOUND BRILLIANT		
1.07 CARAT		
E		
VVS 1		
IDEAL		
60.9%		
57%		
Medium (Faceted)		
Culet	Pointed	
Polex	EXCELLENT	
Symmetry	EXCELLENT	
Fluorescence	NONE	
ID# LG95024711		
Comments:		
As Seen - No Indication of post-growth treatment.		
This Laboratory Grown Diamond was created by High Pressure High Temperature (HPHT) growth process.		
Type IIa		