



**ELECTRONIC COPY**

## LABORATORY GROWN DIAMOND REPORT

March 21, 2025	
IGI Report Number	LG690524758
Description	LABORATORY GROWN DIAMOND
Shape and Cutting Style	ROUND BRILLIANT
Measurements	6.33 - 6.38 X 4.00 MM

## GRADING RESULTS

Carat Weight	1.00 CARAT
Color Grade	D
Clarity Grade	VVS 2
Cut Grade	EXCELLENT

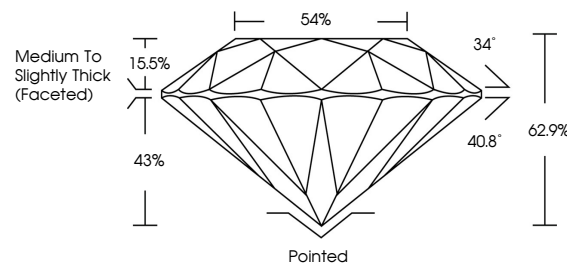
### ADDITIONAL GRADING INFORMATION

Polish	EXCELLENT
Symmetry	EXCELLENT
Fluorescence	NONE
Inscription(s)	 LG690524758

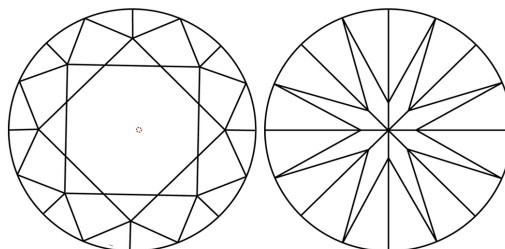
Comments: As Grown - No indication of post-growth treatment.  
This Laboratory Grown Diamond was created by High Pressure High Temperature (HPHT) growth process.  
Type II

LG690524758  
Report verification at [igi.org](https://igi.org)

## PROPORTIONS

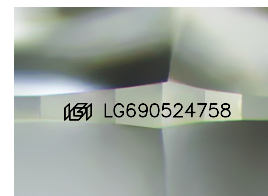


## CLARITY CHARACTERISTICS



## KEY TO SYMBOLS

Red symbols indicate internal characteristics.  
Green symbols indicate external characteristics.



Sample Image Used

**COLOR**

D E F G H I J Faint Very Light Light

## CLARITY

IF      VWS<sup>1-2</sup>      VS<sup>1-2</sup>      SI<sup>1-2</sup>      I<sup>1-3</sup>

Internally Flawless	Very Very Slightly Included	Very Slightly Included	Slightly Included	Included
------------------------	--------------------------------	---------------------------	----------------------	----------

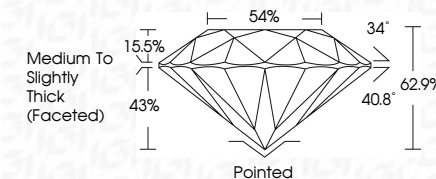
## LABORATORY GROWN DIAMOND REPORT




March 21, 2025	
IGI Report Number	LG690524758
Description	LABORATORY GROWN DIAMOND
Shape and Cutting Style	ROUND BRILLIANT
Measurements	6.33 - 6.38 X 4.00 MM

## GRADING RESULTS

Carat Weight	1.00 CARAT
Color Grade	D
Clarity Grade	VVS 2
Cut Grade	EXCELLENT



### ADDITIONAL GRADING INFORMATION

Polish	EXCELLENT
Symmetry	EXCELLENT
Fluorescence	NONE
Inscription(s)	 LG690524758
Comments: As Grown - No indication of post-growth treatment.	
This Laboratory Grown Diamond was created by High Pressure High Temperature (HPHT) growth process.	
Type II	



IG



© IGI 2020, International Gemological Institute

FD - 10 20

**www.igi.org**



THIS DOCUMENT WAS PRODUCED WITH THE FOLLOWING SECURITY MEASURES: SPECIAL DOCUMENT PAPER, INK SCREENS, WATERMARK, BACKGROUND DESIGNS, HOLOGRAM AND OTHER SECURITY FEATURES NOT LISTED AND DO EXCEED DOCUMENT SECURITY INDUSTRY GUIDELINE

<b>March 21, 2026</b>	<b>ROUND BRILLIANT</b>	<b>1.00 CARAT</b>
<b>GIA Report No. G59024788</b>	<b>Color Weight</b>	<b>D</b>
<b>(1) ROUND BRILLIANT</b>	<b>Carat Weight</b>	<b>VVS 2</b>
<b>3.35 - 3.35 x 4.35 x 10.00 MM</b>	<b>Color Grade</b>	<b>EXCELLENT</b>
	<b>Clarity Grade</b>	<b>62-9%</b>
	<b>Cut Grade</b>	<b>54%</b>
	<b>Depth</b>	<b>Medium To Slightly Thick (rounded)</b>
	<b>Table</b>	<b>Poished</b>
	<b>Girdle</b>	<b>EXCELLENT</b>
	<b>Culet</b>	<b>NONE</b>
	<b>Polish</b>	<b>EXCELLENT</b>
	<b>Symmetry</b>	<b>NONE</b>
	<b>Fluorescence</b>	<b>None</b>
	<b>Inscriptions(s)</b>	<b>GIA G59024788</b>

Comments:  
As Grown - No indication of post-growth treatment.  
The Laboratory Grown Diamond was created by High Pressure High Temperature (HPHT) growth process.