

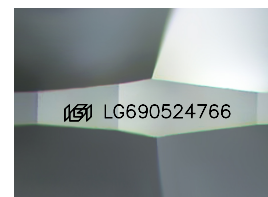
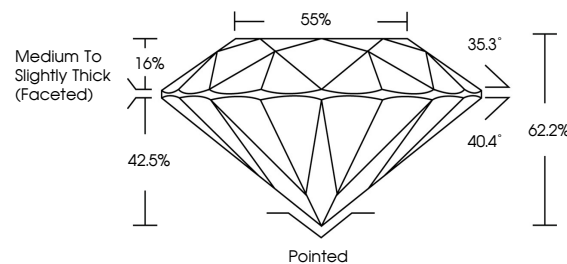


ELECTRONIC COPY

LABORATORY GROWN DIAMOND REPORT

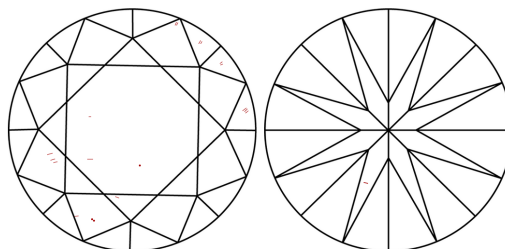
LG690524766
Report verification at lgi.org

PROPORTIONS



Sample Image Used

CLARITY CHARACTERISTICS



KEY TO SYMBOLS

Red symbols indicate internal characteristics.
Green symbols indicate external characteristics.

COLOR

D E F G H I J Faint Very Light Light

CLARITY

IF WS¹⁻² VS¹⁻² SI¹⁻² |¹⁻³

Internally Flawless	Very Very Slightly Included	Very Slightly Included	Slightly Included	Included
------------------------	--------------------------------	---------------------------	----------------------	----------



© IGI 2020, International Gemological Institute

FD - 10 20

www.igi.org

LABORATORY GROWN DIAMOND REPORT



March 22, 2025

IGI Report Number **LG690524766**Description **LABORATORY GROWN DIAMOND**Shape and Cutting Style **ROUND BRILLIANT**

Measurements 6.89 - 6.92 X 4.29 MM

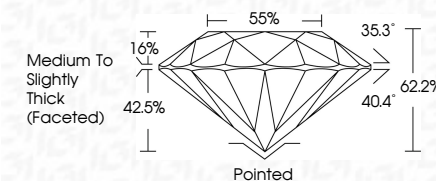
GRADING RESULTS

Carat Weight 1.27 CARAT

Color Grade

Clarity Grade VS 2

Cut Grade **IDEAL**



ADDITIONAL GRADING INFORMATION

Polish EXCELLENT

Symmetry **EXCELLENT**Fluorescence **NONE**Inscription(s) LG690524766

Comments: As Grown - No indication of post-growth treatment.

This Laboratory Grown Diamond was created by High Pressure High Temperature (HPHT) growth process.

Type II

Type II



March 22, 2025	Carat Weight	1.27 CARAT
GI Report No. LG690620765	Color Grade	D
ROUND BRILLIANT	Clarity Grade	VS 2
5.89 x 5.92 X 4.29 MM	Our Grade	IDEAL
	Depth	62.2%
	Table	65%
	Grades	Medium to slightly thick faceted
	Culet	Polished
	Pavil	EXCELLENT
	Symmetry	EXCELLENT
	Fluorescence	NONE
	Inscriptions(s)	681 LG690620765

Comments:
 No growth - No indication of post-growth
 This Laboratory Grown Diamond was
 created by High Pressure High
 Temperature (HPHT) growth process.