

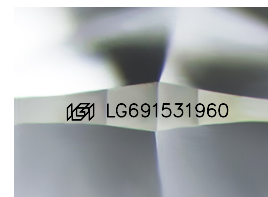
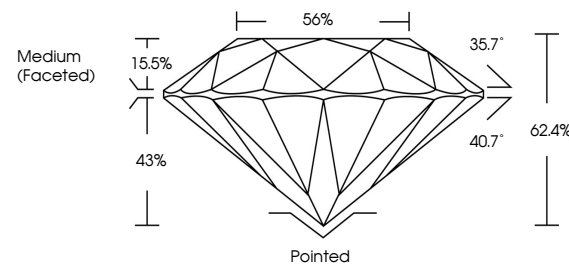


**ELECTRONIC COPY**

## LABORATORY GROWN DIAMOND REPORT

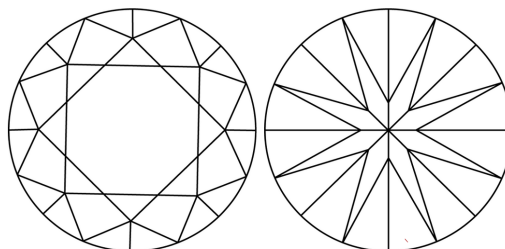
LG691531960  
Report verification at [igi.org](https://igi.org)

## PROPORTIONS



Sample Image Used

## CLARITY CHARACTERISTICS



## KEY TO SYMBOLS

Red symbols indicate internal characteristics.  
Green symbols indicate external characteristics.

## COLOR

D E F G H I J Faint Very Light Light

## CLARITY

IF WS<sup>1-2</sup> VS<sup>1-2</sup> SI<sup>1-2</sup> |<sup>1-3</sup>

Internally Flawless	Very Very Slightly Included	Very Slightly Included	Slightly Included	Included
------------------------	--------------------------------	---------------------------	----------------------	----------



© IGI 2020, International Gemological Institute

FD - 10 20

**www.igi.org**

## LABORATORY GROWN DIAMOND REPORT



March 21, 2025

IGI Report Number **LG691531960**Description **LABORATORY GROWN DIAMOND**Shape and Cutting Style **ROUND BRILLIANT**

Measurements 6.54 - 6.58 X 4.09 MM

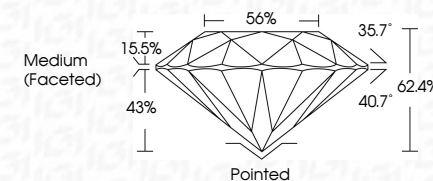
## GRADING RESULTS

Carat Weight **1.09 CARAT**

Color Grade E

Clarity Grade **VVS 1**

Cut Grade **IDEAL**



### ADDITIONAL GRADING INFORMATION

Polish **EXCELLENT**Symmetry **EXCELLENT**Fluorescence **NONE**Inscription(s)  LG691531960

Comments: As Grown - No indication of post-growth treatment.

This Laboratory Grown Diamond was created by High Pressure High Temperature (HPHT) growth process.  
Type II



March 21, 2025	GI Report No LG97153190	1.07 CARAT	E	VVS 1	Painted	<p>Comments:            As seen - No indication of post-growth treatment.</p> <p>This Laboratory Grown Diamond was created by High Pressure High Temperature (HPHT) growth process.</p> <p>Type 1a</p>
ROUND BRILLIANT				IDEAL	EXCELLENT	
				62.4%	NONE	
				50%		
				Medium (Faceted)		
		1.07 MM	Color Grade	Clarity Grade	Cutlet	
				Corat Weight	Polish	
				Color Grade	Symmetry	
				Depth	Fluorescence	
				Table		
				Girdle		