



**ELECTRONIC COPY**

## LABORATORY GROWN DIAMOND REPORT

March 21, 2025	
IGI Report Number	LG691531961
Description	LABORATORY GROWN DIAMOND
Shape and Cutting Style	ROUND BRILLIANT
Measurements	7.18 - 7.19 X 4.39 MM

## GRADING RESULTS

Carat Weight	1.38 CARAT
Color Grade	D
Clarity Grade	VVS 2
Cut Grade	IDEAL

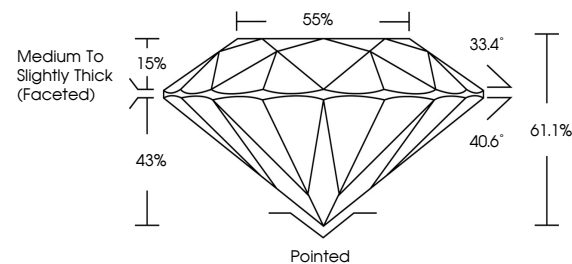
### ADDITIONAL GRADING INFORMATION

Polish	EXCELLENT
Symmetry	EXCELLENT
Fluorescence	NONE
Inscription(s)	 LG691531961

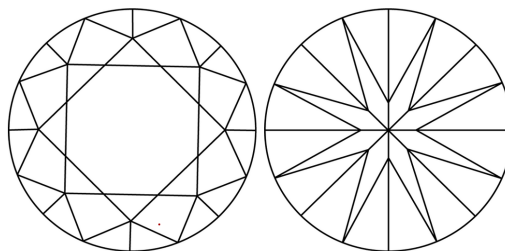
Comments: As Grown - No indication of post-growth treatment.  
This Laboratory Grown Diamond was created by High Pressure High Temperature (HPHT) growth process.  
Type II

LG691531961  
Report verification at [igi.org](https://igi.org)

## PROPORTIONS

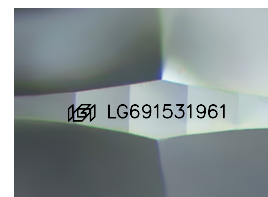


## CLARITY CHARACTERISTICS



## KEY TO SYMBOLS

Red symbols indicate internal characteristics.  
Green symbols indicate external characteristics.



Sample Image Used

## COLOR

D E F G H I J Faint Very Light Light

## CLARITY

IF                      VS<sup>1-2</sup>                      VS<sup>1-2</sup>                      SI<sup>1-2</sup>                      I<sup>1-3</sup>

Internally Flawless	Very Very Slightly Included	Very Slightly Included	Slightly Included	Included
------------------------	--------------------------------	---------------------------	----------------------	----------

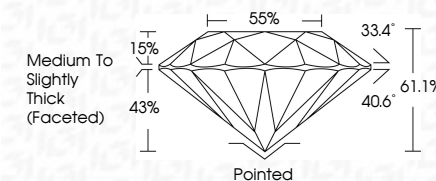
## LABORATORY GROWN DIAMOND REPORT



March 21, 2025	
IGI Report Number	LG691531961
Description	LABORATORY GROWN DIAMOND
Shape and Cutting Style	ROUND BRILLIANT
Measurements	7.18 - 7.19 X 4.39 MM

## GRADING RESULTS

Carat Weight	1.38 CARAT
Color Grade	D
Clarity Grade	VVS 2
Cut Grade	IDEAL



### ADDITIONAL GRADING INFORMATION

Polish	EXCELLENT
Symmetry	EXCELLENT
Fluorescence	NONE
Inscription(s)	<del>(G)</del> LG691531961
<p>Comments: As Grown - No indication of post-growth treatment.</p> <p>This Laboratory Grown Diamond was created by High Pressure High Temperature (HPHT) growth process.</p> <p>Type II</p>	



© IGI 2020, International Gemological Institute

FD - 10 20



THIS DOCUMENT WAS PRODUCED WITH THE FOLLOWING SECURITY MEASURES: SPECIAL DOCUMENT PAPER, INK SCREENS, WATERMARK, BACKGROUND DESIGNS, HOLOGRAM AND OTHER SECURITY FEATURES NOT LISTED AND DO EXCEED DOCUMENT SECURITY INDUSTRY GUIDELINES

**www.igi.org**

	March 21, 2026
<b>(G) Report No. LG971831961</b>	
<b>ROUND BRILLIANT</b>	
<b>7.18 - 7.19 X 4.39 MM</b>	<b>1.38 CARAT</b>
<b>Color Grade</b>	<b>D</b>
<b>Cut Quality Grade</b>	<b>VVS 2</b>
<b>Clarity Grade</b>	<b>IDEAL</b>
<b>Depth</b>	<b>61.1%</b>
<b>Table</b>	<b>55%</b>
<b>Girdle</b>	<b>Medium To Slightly Thick (Faced)</b>
<b>Culet</b>	<b>Pointed</b>
<b>Polish</b>	<b>EXCELLENT</b>
<b>Symmetry</b>	<b>EXCELLENT</b>
<b>Inscription(s)</b>	<b>NONE</b>
	<b>ISSN LG971831961</b>

Comments:

- As Grown - No indication of post-growth treatment.
- The Laboratory Grown Diamond was created by High Pressure High Temperature (HPHT) growth process.
- Type IIb