



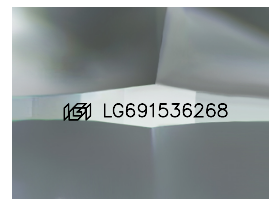
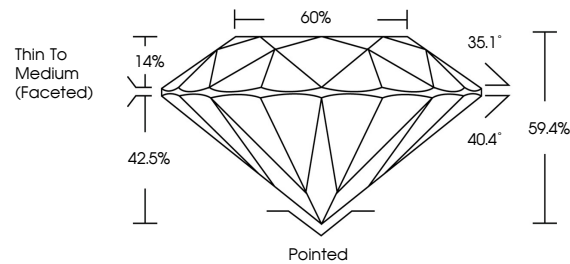
**INTERNATIONAL
GEMOLOGICAL
INSTITUTE**

ELECTRONIC COPY

LABORATORY GROWN DIAMOND REPORT

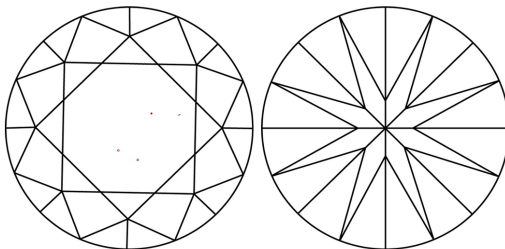
LG691536268
Report verification at igi.org

PROPORTIONS



Sample Image Used

CLARITY CHARACTERISTICS



KEY TO SYMBOLS

Red symbols indicate internal characteristics.
Green symbols indicate external characteristics.

COLOR

D E F G H I J Faint Very Light Light

CLARITY

IF WS¹⁻² VS¹⁻² SI¹⁻² |¹⁻³

Internally Flawless	Very Very Slightly Included	Very Slightly Included	Slightly Included	Included
------------------------	--------------------------------	---------------------------	----------------------	----------



April 1, 2025

IGI Report Number **LG691536268**

Description	LABORATORY GROWN DIAMOND
-------------	--------------------------

Shape and Cutting Style **ROUND BRILLIANT**

Measurements 8.05 - 8.08 X 4.79 MM

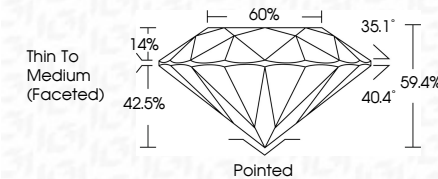
GRADING RESULTS

Carat Weight **1.90 CARAT**

Color Grade	E
-------------	---

Clarity Grade VS 1

Cut Grade **IDEAL**



ADDITIONAL GRADING INFORMATION

Polish **EXCELLENT**Symmetry **EXCELLENT**Fluorescence **NONE**Inscription(s) LG69153626

Comments: This Laboratory Grown Diamond was created by Chemical Vapor Deposition (CVD) growth process.
Type IIa



IG



© IGI 2020, International Gemological Institute

FD - 10 20

www.igi.org

THIS DOCUMENT WAS PRODUCED WITH THE FOLLOWING SECURITY MEASURES: SPECIAL DOCUMENT PAPER, INK SCREENS, WATERMARK, DETERMINED AND DESIGNED, HIGH QUALITY, AND OTHER SECURITY FEATURES INSTALLED, AND DO NOT DISCLOSE TO ANY UNAUTHORIZED PERSONS.

April 1, 2025
GI Report No LG691536268
ROUND BRILLIANT

8.05 - 8.08 X 4.75 MM	1.90 CARAT
Carat Weight	VS 1
Color Grade	IDEAL
Clarity Grade	69.4%
Depth	60%
Table	Thin To Medium (faceted)
Girdle	Pointed
Culet	EXCELLENT
Polish	EXCELLENT
Symmetry	EXCELLENT
Fluorescence	NONE
Measurements (mm)	4mm (Carat) 8.05mm (4)

Comments:
This Laboratory Grown Diamond was created by Chemical Vapor Deposition (CVD) growth process.