

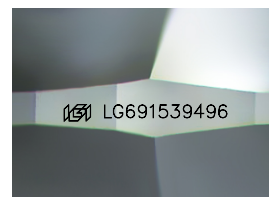
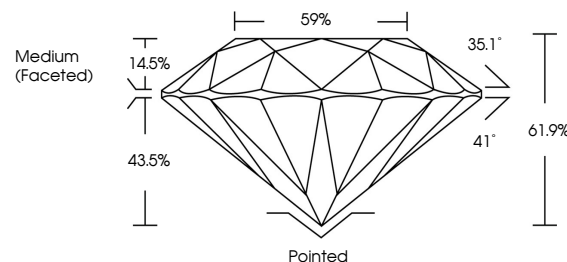


**ELECTRONIC COPY**

## LABORATORY GROWN DIAMOND REPORT

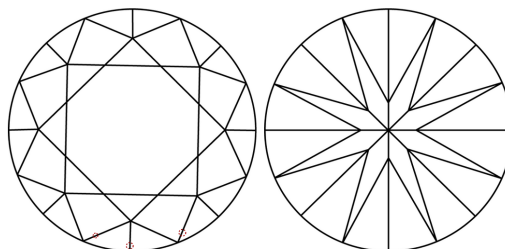
LG691539496  
Report verification at [lgi.org](https://lgi.org)

## PROPORTIONS



Sample Image Used

## CLARITY CHARACTERISTICS



## KEY TO SYMBOLS

Red symbols indicate internal characteristics.  
Green symbols indicate external characteristics.

## COLOR

D E F G H I J Faint Very Light Light

## CLARITY

IF WS<sup>1-2</sup> VS<sup>1-2</sup> SI<sup>1-2</sup> |<sup>1-3</sup>

Internally Flawless	Very Very Slightly Included	Very Slightly Included	Slightly Included	Included
------------------------	--------------------------------	---------------------------	----------------------	----------



March 24, 2025

IGI Report Number **LG691539496**

Description	LABORATORY GROWN DIAMOND
-------------	--------------------------

Shape and Cutting Style **ROUND BRILLIANT**

Measurements 6.39 - 6.42 X 3.97 MM

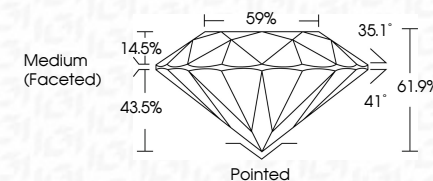
## GRADING RESULTS

Carat Weight 1.01 CARAT

Color Grade

Clarity Grade WS 2

Cut Grade **IDEAL**



### ADDITIONAL GRADING INFORMATION

Polish **EXCELLENT**Symmetry **EXCELLENT**Fluorescence NONInscription(s)  LG691539496

Comments: As Grown - No indication of post-growth treatment.

This Laboratory Grown Diamond was created by High Pressure High Temperature (HPHT) growth process.

Type II



© IGI 2020, International Gemological Institute

FD - 10 20

**www.igi.org**



THIS DOCUMENT WAS PRODUCED WITH THE FOLLOWING SECURITY MEASURES: SPECIAL DOCUMENT PAPER, INK SCREENS, WATERMARK BACKGROUND DESIGNS, HOLOGRAM AND OTHER SECURITY FEATURES NOT LISTED AND DO EXCEED DOCUMENT SECURITY INDUSTRY GUIDELINES

<b>March 24, 2026</b>	<b>G Report No. LG91839A6</b>	
<b>ROUND BRILLIANT</b>	<b>VS2</b>	<b>1.01 CARAT</b>
<b>Color Grade</b>	<b>D</b>	
<b>Carat Weight</b>	<b>VVS 2</b>	
<b>3.39 - 4.42 X 3.97 MM</b>	<b>IDEAL</b>	
	<b>61.9%</b>	
	<b>59%</b>	
	<b>Medium Faceted</b>	
	<b>Culet</b>	<b>Pointed</b>
	<b>Polish</b>	<b>EXCELLENT</b>
	<b>Symmetry</b>	<b>EXCELLENT</b>
	<b>Fluorescence</b>	<b>NONE</b>
	<b>Inscriptions(s)</b>	<b>LG91839A6</b>

**Comments:**  
**As Grown - No indication of post-growth treatment.**  
 This Laboratory Grown Diamond was created by High Pressure High Temperature (HPHT) growth process.  
 Figure 1