



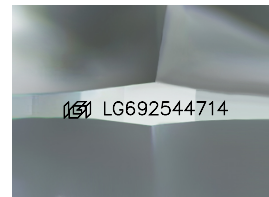
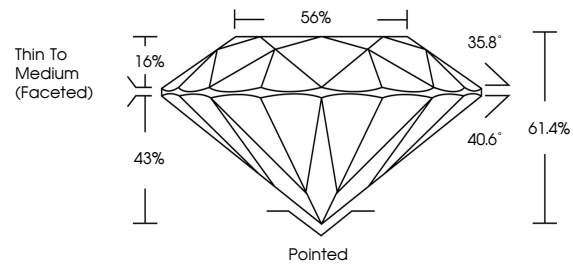
**INTERNATIONAL
GEMOLOGICAL
INSTITUTE**

ELECTRONIC COPY

LABORATORY GROWN DIAMOND REPORT

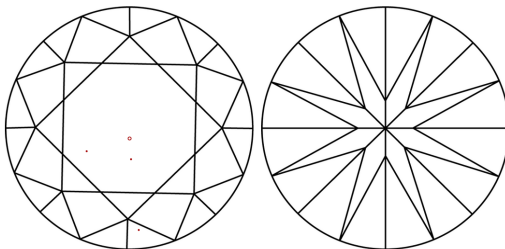
LG692544714
Report verification at igi.org

PROPORTIONS



Sample Image Used

CLARITY CHARACTERISTICS



KEY TO SYMBOLS

Red symbols indicate internal characteristics.
Green symbols indicate external characteristics.

COLOR

D E F G H I J Faint Very Light Light

CLARITY

IF WS¹⁻² VS¹⁻² SI¹⁻² |¹⁻³

Internally Flawless	Very Very Slightly Included	Very Slightly Included	Slightly Included	Included
------------------------	--------------------------------	---------------------------	----------------------	----------



March 21, 2025

IGI Report Number **LG692544714**

Description	LABORATORY GROWN DIAMOND
-------------	--------------------------

Shape and Cutting Style **ROUND BRILLIANT**

Measurements 9.16 - 9.20 X 5.64 MM

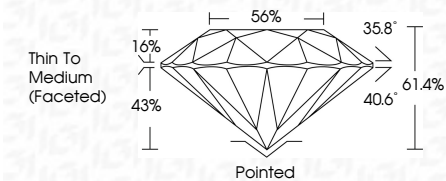
GRADING RESULTS

Carat Weight **2.90 CARATS**

Color Grade	E
-------------	---

Clarity Grade VS 2

Cut Grade **IDEAL**



ADDITIONAL GRADING INFORMATION

Polish **EXCELLENT**Symmetry **EXCELLENT**Fluorescence **NONE**Inscription(s) LG692544714

Comments: This Laboratory Grown Diamond was created by Chemical Vapor Deposition (CVD) growth process.
Type IIa



IG



© IGI 2020, International Gemological Institute

FD - 10 20

www.igi.org

THIS DOCUMENT WAS PRODUCED WITH THE FOLLOWING SECURITY MEASURES: SPECIAL DOCUMENT PAPER, INK SCREENS, WATERMARK, PHOTOGRAPHIC DESIGN, HOLE PUNCH, AND OTHER SECURITY FEATURES NOT LISTED, AND NOT ENGAGED BY OUR BUSINESS PARTNERS IN ORDER TO

March 21, 2025
IGI Report No LG692544714
ROUND BRILLIANT

9.16 - 9.20 X 5.64 MM	2.90 CARATS
Carat Weight	VS 2
Color Grade	IDEAL
Clarity Grade	61.4%
Cut Grade	85%
Depth	Thin To Medium (faceted)
Table	Pointed
Girdle	EXCELLENT
Culet	NONE
Polish	EXCELLENT
Symmetry	EXCELLENT
Fluorescence	NONE
Inspection's	4441162042714

Comments:
This Laboratory Grown Diamond was created by Chemical Vapor Deposition (CVD) growth process.