

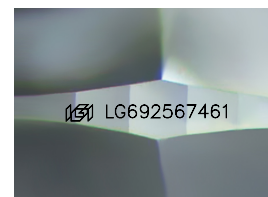
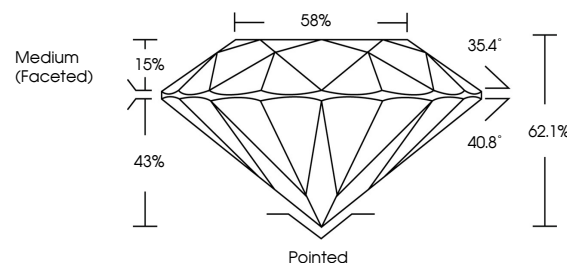


ELECTRONIC COPY

LABORATORY GROWN DIAMOND REPORT

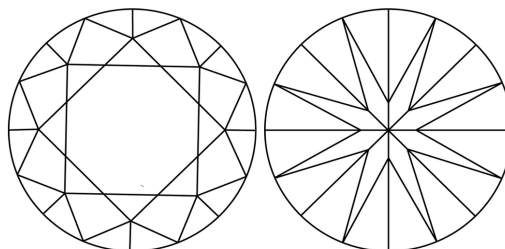
LG692567461
Report verification at igi.org

PROPORTIONS



Sample Image Used

CLARITY CHARACTERISTICS



KEY TO SYMBOLS

Red symbols indicate internal characteristics.
Green symbols indicate external characteristics.

COLOR

D E F G H I J Faint Very Light Light

CLARITY

IF WS¹⁻² VS¹⁻² SI¹⁻² |¹⁻³

Internally Flawless	Very Very Slightly Included	Very Slightly Included	Slightly Included	Included
------------------------	--------------------------------	---------------------------	----------------------	----------



© IGI 2020, International Gemological Institute

FD - 10 20

www.igi.org

LABORATORY GROWN DIAMOND REPORT



July 30, 2025

IGI Report Number **LG692567461**Description **LABORATORY GROWN DIAMOND**Shape and Cutting Style **ROUND BRILLIANT**

Measurements 6.46 - 6.51 X 4.03 MM

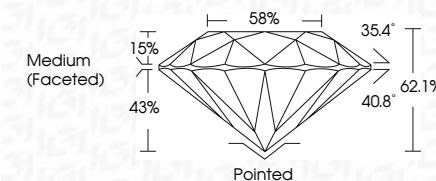
GRADING RESULTS

Carat Weight 1.05 CARAT

Color Grade

Clarity Grade WS 1

Cut Grade **IDEAL**



ADDITIONAL GRADING INFORMATION

Polish EXCELLENT

Symmetry **EXCELLENT**Fluorescence **NONE**Inscription(s) LG692567461

Comments: As Grown - No indication of post-growth treatment.

This Laboratory Grown Diamond was created by High Pressure High Temperature (HPHT) growth process.

Type II



JULY 30, 2025 GI Report No. G69252/461 ROUND BRILLIANT	1.05 CARAT E VS 1 IDEAL 62.1% 59% Medium (Faced)	Pointed EXCELLENT EXCELLENT NONE #69169252/461
4.46 - 4.51 X 6.03 MM Corat Weight Color Grade Clarity Grade Depth Table Girdle	None None None None None None	None None None None None None

Comments: As shown - No indication of post-growth treatment.
 Laboratory Grown Diamond was produced by High Pressure High Temperature (HPHT) growth process.