



**INTERNATIONAL
GEMOLOGICAL
INSTITUTE**

ELECTRONIC COPY

LG693505310
Report verification at igi.org

LABORATORY GROWN DIAMOND REPORT



March 24, 2025

IGI Report Number **LG693505310**Description **LABORATORY GROWN DIAMOND**Shape and Cutting Style **ROUND BRILLIANT**

Measurements 9.21 - 9.26 X 5.49 MM

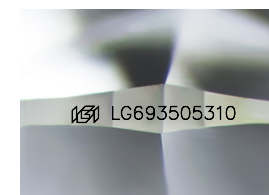
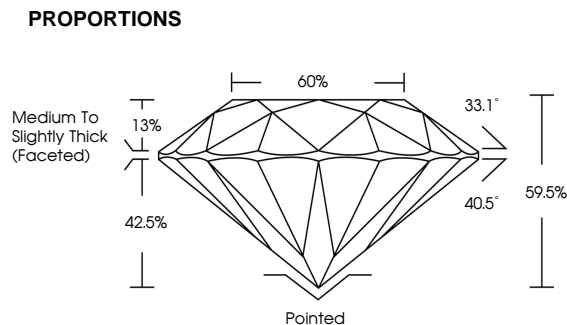
GRADING RESULTS

Carat Weight **2.87 CARATS**

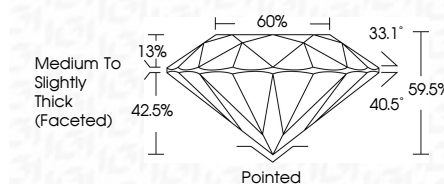
Color Grade E

Clarity Grade VS 1

Cut Grade **IDEAL**



Sample Image Used



COLOR

D E F G H I J Faint Very Light Light

CLARITY

IF WS¹⁻² VS¹⁻² SI¹⁻² |¹⁻³

Internally Flawless	Very Very Slightly Included	Very Slightly Included	Slightly Included	Included
------------------------	--------------------------------	---------------------------	----------------------	----------



© IGI 2020, International Gemological Institute

FD - 10 20

www.igi.org



THIS DOCUMENT WAS PRODUCED WITH THE FOLLOWING SECURITY MEASURES: SPECIAL DOCUMENT PAPER, INK SCREENS, WATERMARK, BACKGROUND DESIGNS, HOLOGRAM AND OTHER SECURITY FEATURES NOT LISTED AND DO EXCEED DOCUMENT SECURITY INDUSTRY GUIDELINES



March 24, 2005	GI Report No. LG59505310	2.87 CARATS	E
ROUND BRILLIANT			
2.21 x .92 x 5.49 MM	Carat Weight	VSI 1	IDEAL
	Color Grade		69.5%
	Clarity Grade		65%
	Cut Grade		Medium to Slightly Thick (Faceted)
	Depth		Polished
	Table		EXCELLENT
	Girdle		SYMMETRY
			Fluorescence
			Inscriptions(s)
			NONE
			lg5950530310

Comments:
 This is a Chemically Grown Diamond was
 identified by Chemical Vapor Deposition
 (CVD) growth process.
 Type IIa