



**ELECTRONIC COPY**

## LABORATORY GROWN DIAMOND REPORT

March 22, 2025

IGI Report Number **LG693505523**

Description	LABORATORY GROWN DIAMOND
-------------	--------------------------

Shape and Cutting Style **ROUND BRILLIANT**

Measurements 8.16 - 8.19 X 4.91 MM

## GRADING RESULTS

Carat Weight 2.01 CARATS

Color Grade E

Clarity Grade VS 1

Cut Grade IDEAL

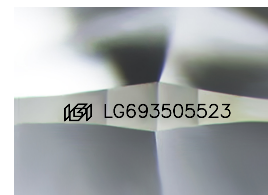
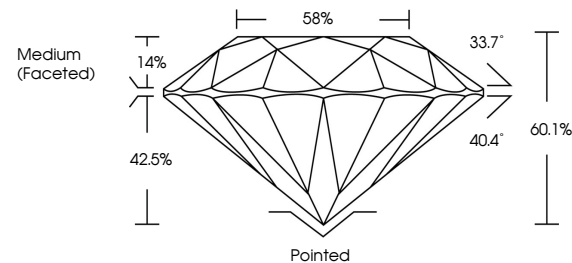
### ADDITIONAL GRADING INFORMATION

Polish **EXCELLENT**Symmetry **EXCELLENT**Fluorescence **NONE**Inscription(s)  LG693505523

Comments: This Laboratory Grown Diamond was created by Chemical Vapor Deposition (CVD) growth process.  
Type IIa

LG693505523  
Report verification at [igi.org](https://igi.org)

## PROPORTIONS



Sample Image Used

## COLOR

D E F G H I J Faint Very Light Light

## CLARITY

IF                      WS<sup>1-2</sup>                      VS<sup>1-2</sup>                      SI<sup>1-2</sup>                      |<sup>1-3</sup>

Internally Flawless	Very Very Slightly Included	Very Slightly Included	Slightly Included	Included
------------------------	--------------------------------	---------------------------	----------------------	----------

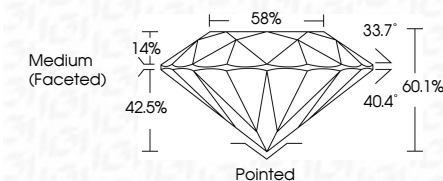
## LABORATORY GROWN DIAMOND REPORT



March 22, 2025	
IGI Report Number	LG693505523
Description	LABORATORY GROWN DIAMOND
Shape and Cutting Style	ROUND BRILLIANT
Measurements	8.16 - 8.19 X 4.91 MM

## GRADING RESULTS

Carat Weight	2.01 CARATS
Color Grade	E
Clarity Grade	VS 1
Cut Grade	IDEAL



### ADDITIONAL GRADING INFORMATION

Polish	EXCELLENT
Symmetry	EXCELLENT
Fluorescence	NONE
Inscription(s)	(18) LG-693505523

Comments: This Laboratory Grown Diamond was created by Chemical Vapor Deposition (CVD) growth process.  
Type IIa



© IGI 2020, International Gemological Institute

FD - 10 20



THIS DOCUMENT WAS PRODUCED WITH THE FOLLOWING SECURITY MEASURES: SPECIAL DOCUMENT PAPER, INK SCREENS, WATERMARK, BACKGROUND DESIGNS, HOLOGRAM AND OTHER SECURITY FEATURES NOT LISTED AND DO EXCEED DOCUMENT SECURITY INDUSTRY GUIDELINES

**www.igi.org**

<b>March 22, 2025</b>	<b>GI Report No. LG969855623</b>	<b>ROUND BRILLIANT</b>	<b>2.01 CARATS</b>	<b>E</b>	<b>VSI</b>	<b>IDEAL</b>	<b>60.1%</b>	<b>58%</b>	<b>Medium FacetedD</b>	<b>Patched</b>	<b>EXCELLENT</b>	<b>EXCELLENT</b>	<b>NONE</b>	<b>#691 LG969855623</b>	<b>Comments:</b>
		<b>16.16 X 10.71 X 4.91 MM</b>													The Laboratory Grown Diamond was certified as being produced by the CVD growth process.
		<b>Carat Weight</b>	<b>Color Grade</b>	<b>Clarity Grade</b>	<b>Cut Grade</b>	<b>Depth</b>	<b>Girdle</b>	<b>Culet</b>	<b>Symmetry</b>	<b>Fluorescence</b>	<b>Inscriptions(s)</b>				<b>Type IIG</b>