



**ELECTRONIC COPY**

## LABORATORY GROWN DIAMOND REPORT

|                         |                                                |
|-------------------------|------------------------------------------------|
| March 24, 2025          |                                                |
| IGI Report Number       | LG693529029                                    |
| Description             | LABORATORY GROWN DIAMOND                       |
| Shape and Cutting Style | CUT CORNERED RECTANGULAR<br>MODIFIED BRILLIANT |
| Measurements            | 10.12 X 7.29 X 4.83 MM                         |

## GRADING RESULTS

|               |             |
|---------------|-------------|
| Carat Weight  | 3.08 CARATS |
| Color Grade   | D           |
| Clarity Grade | VS 2        |

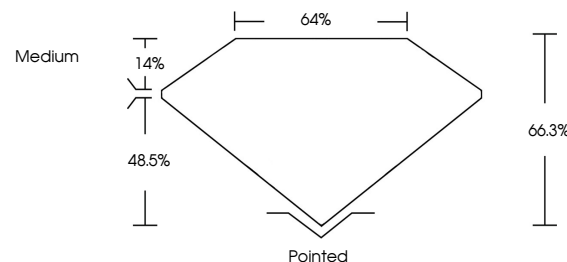
### ADDITIONAL GRADING INFORMATION

|                |                                                                                                |
|----------------|------------------------------------------------------------------------------------------------|
| Polish         | EXCELLENT                                                                                      |
| Symmetry       | EXCELLENT                                                                                      |
| Fluorescence   | NONE                                                                                           |
| Inscription(s) |  LG693529029 |

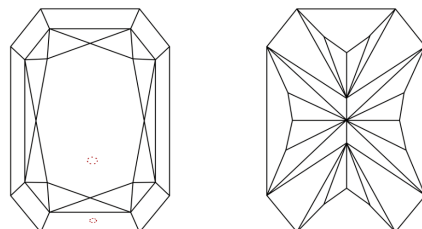
Comments: This Laboratory Grown Diamond was created by Chemical Vapor Deposition (CVD) growth process.  
Type IIa

LG693529029  
Report verification at [lgi.org](https://lgi.org)

## PROPORTIONS

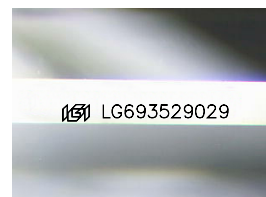


## CLARITY CHARACTERISTICS



### KEY TO SYMBOLS

Red symbols indicate internal characteristics.  
Green symbols indicate external characteristics.



Sample Image Used

## COLOR

D E F G H I J Faint Very Light Light

## CLARITY

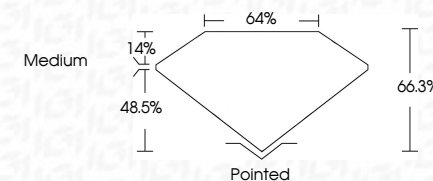
IF      VWS<sup>1-2</sup>      VS<sup>1-2</sup>      SI<sup>1-2</sup>      I<sup>1-3</sup>

| Internally<br>Flawless | Very Very<br>Slightly Included | Very<br>Slightly Included | Slightly<br>Included | Included |
|------------------------|--------------------------------|---------------------------|----------------------|----------|
|------------------------|--------------------------------|---------------------------|----------------------|----------|

## LABORATORY GROWN DIAMOND REPORT



|                         |                                                   |
|-------------------------|---------------------------------------------------|
| March 24, 2025          |                                                   |
| IGI Report Number       | LG693529029                                       |
| Description             | LABORATORY GROWN DIAMOND                          |
| Shape and Cutting Style | CUT CORNERED<br>RECTANGULAR MODIFIED<br>BRILLIANT |
| Measurements            | 10.12 X 7.29 X 4.83 MM                            |
| GRADING RESULTS         |                                                   |
| Carat Weight            | 3.08 CARATS                                       |
| Color Grade             | D                                                 |
| Clarity Grade           | VS 2                                              |



### ADDITIONAL GRADING INFORMATION

|                                                                                                                               |                                                                                                 |
|-------------------------------------------------------------------------------------------------------------------------------|-------------------------------------------------------------------------------------------------|
| Polish                                                                                                                        | EXCELLENT                                                                                       |
| Symmetry                                                                                                                      | EXCELLENT                                                                                       |
| Fluorescence                                                                                                                  | NONE                                                                                            |
| Inscription(s)                                                                                                                |  LG693529029 |
| <p>Comments: This Laboratory Grown Diamond was created by Chemical Vapor Deposition (CVD) growth process.</p> <p>Type IIa</p> |                                                                                                 |



© IGI 2020, International Gemological Institute

FD - 10 20

**www.igi.org**

THIS DOCUMENT WAS PRODUCED WITH THE FOLLOWING SECURITY MEASURES: SPECIAL DOCUMENT PAPER, INK SCREENS, WATERMARK, BACKGROUND DESIGNS, HOLOGRAM AND OTHER SECURITY FEATURES NOT LISTED AND DO EXCEED DOCUMENT SECURITY INDUSTRY GUIDELINE

|                                      |                         |                |   |
|--------------------------------------|-------------------------|----------------|---|
| March 24, 2025                       | GI Report No LG49350029 | 3.08 CARATS    | D |
| CU CORNERED RECT, MODIFIED BRILLIANT |                         |                |   |
| 10.12 X 7.29 X 4.63 MM               |                         |                |   |
| Carat Weight                         | Clarity Grade           | VS 2           |   |
| Color Grade                          | Depth                   | 66.3%          |   |
|                                      | Table                   | 64%            |   |
|                                      | Girdle                  | Medium         |   |
|                                      | Culet                   | Polished       |   |
|                                      | Polish                  | EXCELLENT      |   |
|                                      | Symmetry                | EXCELLENT      |   |
|                                      | Fluorescence            | NONE           |   |
|                                      | Comments                | See LG49350029 |   |

**Comments:**  
This Laboratory Grown Diamond was  
created by Chemical Vapor Deposition  
(CVD) growth process.