



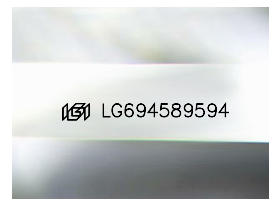
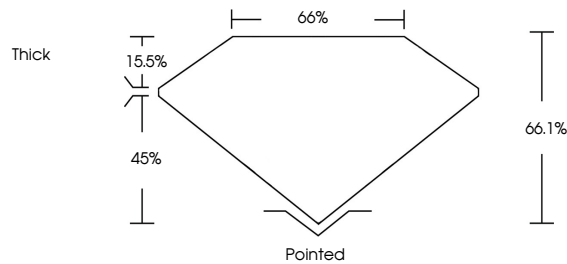
**INTERNATIONAL  
GEMOLOGICAL  
INSTITUTE**

**ELECTRONIC COPY**

## LABORATORY GROWN DIAMOND REPORT

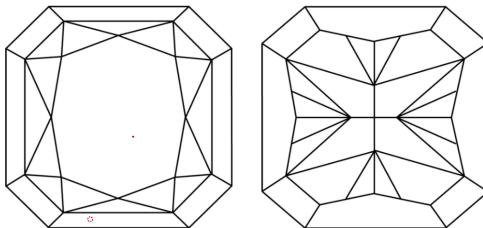
LG694589594  
Report verification at [igi.org](https://www.igi.org)

## PROPORTIONS



Sample Image Used

## CLARITY CHARACTERISTICS



## KEY TO SYMBOLS

Red symbols indicate internal characteristics.  
Green symbols indicate external characteristics.

## COLOR

D E F G H I J Faint Very Light Light

## CLARITY

IF      WS<sup>1-2</sup>      VS<sup>1-2</sup>      SI<sup>1-2</sup>      I<sup>1-3</sup>

Internally Flawless	Very Very Slightly Included	Very Slightly Included	Slightly Included	Included
------------------------	--------------------------------	---------------------------	----------------------	----------



April 7, 2025

IGI Report Number **LG694589594**

Description	LABORATORY GROWN DIAMOND
-------------	--------------------------

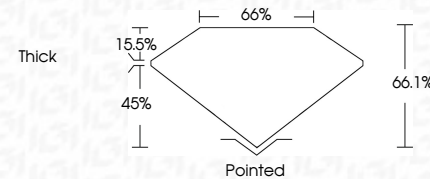
Shape and Cutting Style **CUT CORNERED SQUARE  
MODIFIED BRILLIANT**

Measurements **8.42 X 8.37 X 5.53 MM**

## GRADING RESULTS

Carat Weight **3.53 CARATS**

Color Grade	D
-------------	---

Clarity Grade **VVS 2**

### ADDITIONAL GRADING INFORMATION

Polish **EXCELLENT**

Symmetry **EXCELLENT**

Fluorescence **NONE**Inscription(s)  LG694589594

Comments: This Laboratory Grown Diamond was created by Chemical Vapor Deposition (CVD) growth process.  
Type IIa



IG



© IGI 2020, International Gemological Institute

FD - 10 20

**www.igi.org**

THIS DOCUMENT WAS PRODUCED WITH THE FOLLOWING SECURITY MEASURES: SPECIAL DOCUMENT PAPER, INK SCREENS, WATERMARK, BACKGROUND DESIGNS, HOLOGRAM AND OTHER SECURITY FEATURES NOT LISTED AND DO EXCEED DOCUMENT SECURITY INDUSTRY GUIDELINES

April 7, 2025	Report No. LG4549594	3.53 CARATS
IGI Certified	CIT CORNERED SQUARE MODIFIED	D
BRIGHT		VVS 2
	8.42 X 8.37 X 5.53 MM	64.1%
		66%
		Thick
		Polished
		EXCELLENT
		EXCELLENT
		NONE
		IGI LG4549594

Comments:  
 The Laboratory Grown Diamond was  
 created by Chemical Vapor Deposition  
 growth process.  
 Type IIc