



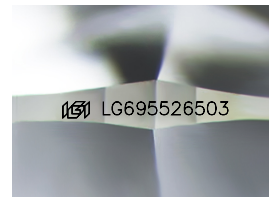
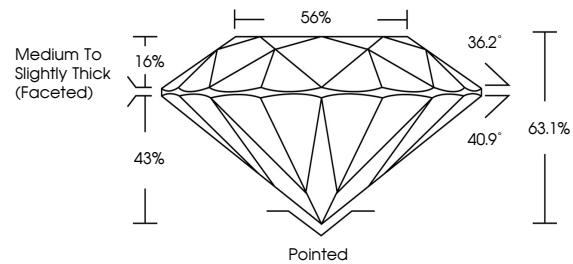
**INTERNATIONAL  
GEMOLOGICAL  
INSTITUTE**

**ELECTRONIC COPY**

## LABORATORY GROWN DIAMOND REPORT

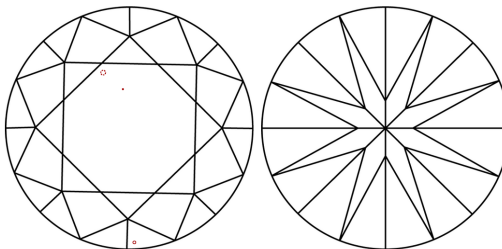
LG695526503  
Report verification at [igi.org](https://igi.org)

## PROPORTIONS



Sample Image Used

## CLARITY CHARACTERISTICS



## KEY TO SYMBOLS

Red symbols indicate internal characteristics.  
Green symbols indicate external characteristics.

**COLOR**

D E F G H I J Faint Very Light Light

## CLARITY

IF      WS<sup>1-2</sup>      VS<sup>1-2</sup>      SI<sup>1-2</sup>      |<sup>1-3</sup>

Internally Flawless	Very Very Slightly Included	Very Slightly Included	Slightly Included	Included
------------------------	--------------------------------	---------------------------	----------------------	----------



© IGI 2020, International Gemological Institute

FD - 10 20

**www.igi.org**

LABORATORY GROWN DIAMOND REPORT



April 3, 2025

IGI Report Number **LG695526503**

Description	LABORATORY GROWN DIAMOND
-------------	--------------------------

Shape and Cutting Style **ROUND BRILLIANT**

Measurements 7.40 - 7.42 X 4.67 MM

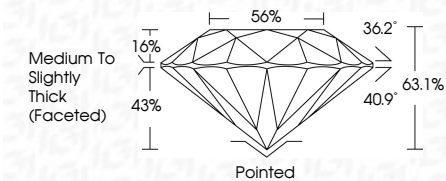
## GRADING RESULTS

Carat Weight **1.59 CARAT**

Color Grade	D
-------------	---

Clarity Grade VS 1

Cut Grade **EXCELLENT**



### ADDITIONAL GRADING INFORMATION

Polish **EXCELLENCE**Symmetry **EXCELLENCE**

Fluorescence NONI

Inscription(s)  LG69552650

Comments: This Laboratory Grown Diamond was created by Chemical Vapor Deposition (CVD) growth process.  
Type IIa



IG

April 3, 2025	IGI Report No LG95952603
ROUND BRILLIANT	
7.40 - 7.42 X 4.67 MM	1.59 CARAT
Carat Weight	D
Color Grade	Vs 1
Clarity Grade	EXCELLENT
Cut Grade	6A 1%
Depth	66%
Table	Medium to Slightly Thick Faceted
Girdle	
Culet	Pointed
Polish	EXCELLENT
Symmetry	EXCELLENT
Fluorescence	NONE
Inscription(s)	IGI LG95952603
Comments: This is a Chemically Grown Diamond was created by Chemical Vapor Deposition (CVD) growth process. Type IIa	