



**INTERNATIONAL  
GEMOLOGICAL  
INSTITUTE**

**ELECTRONIC COPY**

LG696508360  
Report verification at [igi.org](https://igi.org)

LABORATORY GROWN DIAMOND REPORT



April 7, 2025

IGI Report Number LG696508360

Description	LABORATORY GROWN DIAMOND
-------------	--------------------------

Shape and Cutting Style **ROUND BRILLIANT**

Measurements	8.60 - 8.64 X 5.20 MM
--------------	-----------------------

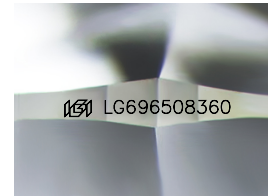
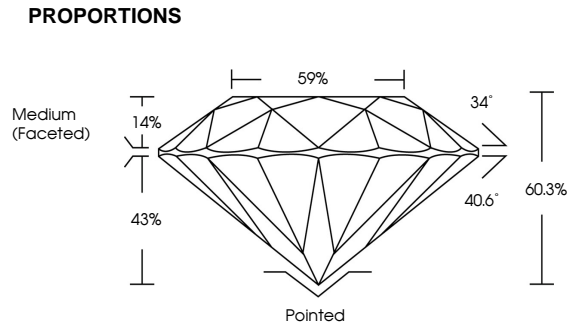
## GRADING RESULTS

Carat Weight **2.38 CARATS**

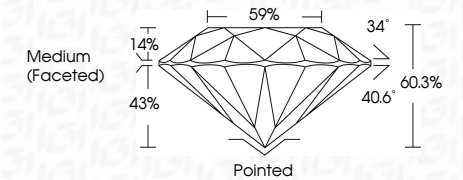
Color Grade	E
-------------	---

Clarity Grade **VS 1**

Cut Grade **IDEAL**



Sample Image Used



## COLOR

D E F G H I J Faint Very Light Light

## CLARITY

IF                      WS<sup>1-2</sup>                      VS<sup>1-2</sup>                      SI<sup>1-2</sup>                      I<sup>1-2</sup>

Internally Flawless	Very Very Slightly Included	Very Slightly Included	Slightly Included	Included
------------------------	--------------------------------	---------------------------	----------------------	----------



© IGI 2020, International Gemological Institute

FD - 10 20

**www.igi.org**



THIS DOCUMENT WAS PRODUCED WITH THE FOLLOWING SECURITY MEASURES: SPECIAL DOCUMENT PAPER, INK SCREENS, WATERMARK, BACKGROUND DESIGNS, HOLOGRAM AND OTHER SECURITY FEATURES NOT LISTED AND DO EXCEED DOCUMENT SECURITY INDUSTRY GUIDELINES

### ADDITIONAL GRADING INFORMATION

Polish EXCELLENT

Symmetry **EXCELLENT**Fluorescence **NONE**Inscription(s)  LG696508360

Comments: This Laboratory Grown Diamond was created by Chemical Vapor Deposition (CVD) growth process.  
Type IIa



IGI

April 7, 2026	Color Weight	2.38 CARATS	
IGI Report No. LG59608360	Color Grade		E
ROUND BRILLIANT	Clarity Grade		VS 1
16.00 - 16.4 X 5.20 MM	Cut Grade		IDEAL
	Depth		60.3%
	Table		59%
	Girdle	Medium Faceted	
	Culet	Pointed	
	Polish	EXCELLENT	
	Symmetry	EXCELLENT	
	Fluorescence	NONE	
	Inscription(s)		
			IGI LG59608360

Comments:  
 This Laboratory Grown Diamond was  
 created by Chemical Vapor Deposition  
 (CVD) growth process.  
 Type IIa