



**ELECTRONIC COPY**

## LABORATORY GROWN DIAMOND REPORT

LG696508394  
Report verification at [igi.org](https://igi.org)

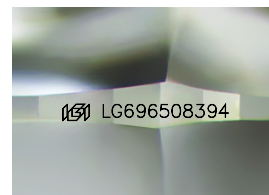
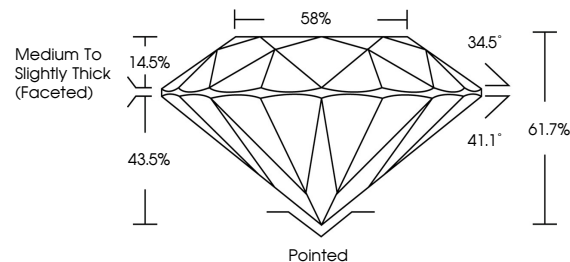
April 8, 2025	
IGI Report Number	LG696508394
Description	LABORATORY GROWN DIAMOND
Shape and Cutting Style	ROUND BRILLIANT
Measurements	8.45 - 8.49 X 5.23 MM
GRADING RESULTS	
Carat Weight	2.31 CARATS
Color Grade	E
Clarity Grade	VS 1
Cut Grade	IDEAL

### ADDITIONAL GRADING INFORMATION

Polish	EXCELLENT
Symmetry	EXCELLENT
Fluorescence	NONE
Inscription(s)	15 LG696508394

Comments: This Laboratory Grown Diamond was created by Chemical Vapor Deposition (CVD) growth process.  
Type IIa

## PROPORTIONS



Sample Image Used

## COLOR

D E F G H I J Faint Very Light Light

## CLARITY

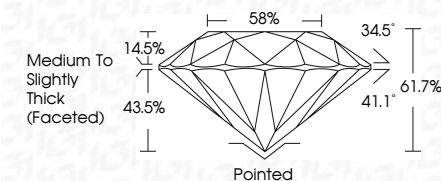
IF                      WS<sup>1-2</sup>                      VS<sup>1-2</sup>                      SI<sup>1-2</sup>                      |<sup>1-3</sup>

Internally Flawless	Very Very Slightly Included	Very Slightly Included	Slightly Included	Included
------------------------	--------------------------------	---------------------------	----------------------	----------

## LABORATORY GROWN DIAMOND REPORT



April 8, 2025	
IGI Report Number	LG696508394
Description	LABORATORY GROWN DIAMOND
Shape and Cutting Style	ROUND BRILLIANT
Measurements	8.45 - 8.49 X 5.23 MM
GRADING RESULTS	
Carat Weight	2.31 CARATS
Color Grade	E
Clarity Grade	VS 1
Cut Grade	IDEAL



### ADDITIONAL GRADING INFORMATION

Polish	EXCELLENT
Symmetry	EXCELLENT
Fluorescence	NONE
Inscription(s)	 LG696508394
Comments: This Laboratory Grown Diamond was created by Chemical Vapor Deposition (CVD) growth process.	
Type IIa	



IG



© IGI 2020, International Gemological Institute

FD - 10 20

**www.igi.org**



THIS DOCUMENT WAS PRODUCED WITH THE FOLLOWING SECURITY MEASURES: SPECIAL DOCUMENT PAPER, INK SCREENS, WATERMARK, BACKGROUND DESIGNS, HOLOGRAM AND OTHER SECURITY FEATURES NOT LISTED AND DO EXCEED DOCUMENT SECURITY INDUSTRY GUIDELINES

April 8, 2025  
IGI Report No LG696508394  
ROUND BRILLIANT

<b>6.45 - 8.49 X 5.23 MM</b>	<b>2.31 CARATS</b>	<b>E</b>
Carat Weight	VS 1	IDEAL
Color Grade	61.7%	58%
Clarity Grade	Medium To Slightly Thick	(Faceted)
Cut Grade		Pointed
Depth		EXCELLENT
Table		EXCELLENT
Girdle		NONE
Culet		Small (1/2mm or less)
Polish		Symmetry
Fluorescence		Fluorescence

**Comments:**  
This Laboratory Grown Diamond was created by Chemical Vapor Deposition (CVD) growth process.