

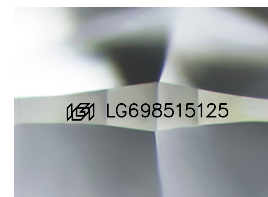
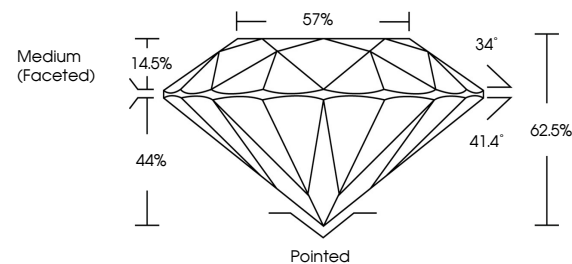


ELECTRONIC COPY

LABORATORY GROWN DIAMOND REPORT

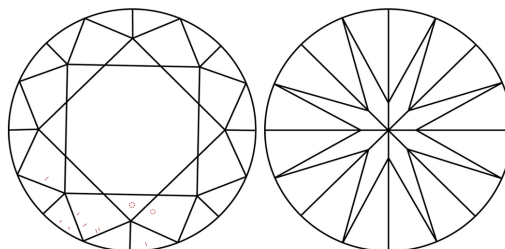
LG698515125
Report verification at igi.org

PROPORTIONS



Sample Image Used

CLARITY CHARACTERISTICS



KEY TO SYMBOLS

Red symbols indicate internal characteristics.
Green symbols indicate external characteristics.

COLOR

D E F G H I J Faint Very Light Light

CLARITY

IF WS¹⁻² VS¹⁻² S¹⁻² |¹⁻³

Internally Flawless	Very Very Slightly Included	Very Slightly Included	Slightly Included	Included
------------------------	--------------------------------	---------------------------	----------------------	----------



© IGI 2020, International Gemological Institute

FD - 10 20

www.igi.org

LABORATORY GROWN DIAMOND REPORT



April 11, 2025

IGI Report Number **LG698515125**Description **LABORATORY GROWN DIAMOND**Shape and Cutting Style **ROUND BRILLIANT**

Measurements 7.29 - 7.34 X 4.57 MM

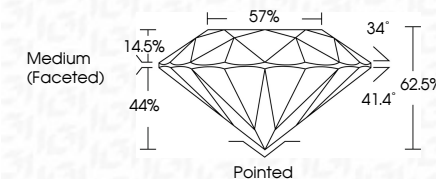
GRADING RESULTS

Carat Weight **1.51 CARAT**

Color Grade	D
-------------	---

Clarity Grade VVS 2

Cut Grade **IDEAL**



ADDITIONAL GRADING INFORMATION

Polish **EXCELLENT**Symmetry **EXCELLENT**Fluorescence **NONE**Inscription(s) LG698515125

Comments: As Grown - No indication of post-growth treatment.

This Laboratory Grown Diamond was created by High Pressure High Temperature (HPHT) growth process.



April 11, 2026	G Report No LG98651325	2.29 - 7.34 X 4.57 MM	1.51 CARAT	D	VVS 2	PAINTED	EXCELLENT	NONE	(#) LG98651325
ROUND BRILLIANT	Coral Weight	Color Grade	Clarity Grade	Cut Grade	Depth	Symmetry	Fluorescence	Comments:	No Indication of post-growth treatment.
					Tenable			This Laboratory Grown Diamond was created by High Pressure High Temperature (HPHT) growth process.	
					Grade			Type IIa	