



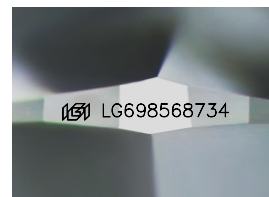
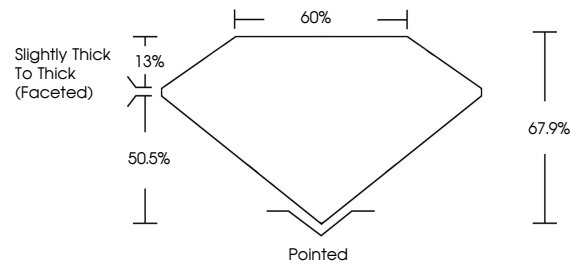
**INTERNATIONAL  
GEMOLOGICAL  
INSTITUTE**

**ELECTRONIC COPY**

## LABORATORY GROWN DIAMOND REPORT

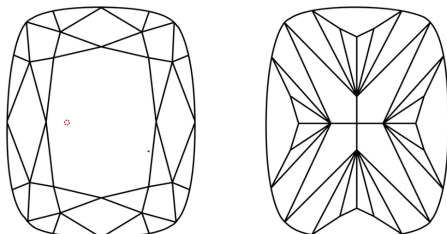
LG698568734  
Report verification at [igi.org](https://www.igi.org)

## PROPORTIONS



Sample Image Used

## CLARITY CHARACTERISTICS



## KEY TO SYMBOLS

Red symbols indicate internal characteristics.  
Green symbols indicate external characteristics.

**COLOR**

D E F G H I J Faint Very Light Light

## CLARITY

IF      WS<sup>1-2</sup>      VS<sup>1-2</sup>      SI<sup>1-2</sup>      I<sup>1-3</sup>

Internally Flawless	Very Very Slightly Included	Very Slightly Included	Slightly Included	Included
------------------------	--------------------------------	---------------------------	----------------------	----------



© IGI 2020, International Gemological Institute

FD - 10 20

**www.igi.org**

LABORATORY GROWN DIAMOND REPORT



April 18, 2025

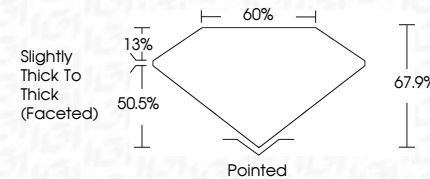
IGI Report Number **LG698568734**

Description	LABORATORY GROWN DIAMOND
-------------	--------------------------

Shape and Cutting Style **CUSHION MODIFIED  
BRILLIANT**

Measurements **9.88 X 7.57 X 5.14 MM**

## GRADING RESULTS

Carat Weight **3.07 CARATS**Color Grade **E**Clarity Grade **VVS 2**

### ADDITIONAL GRADING INFORMATION

Polish **EXCELLENT**Symmetry **EXCELLENT**Fluorescence **NONE**Inscription(s)  LG698568734

Comments: This Laboratory Grown Diamond was created by Chemical Vapor Deposition (CVD) growth process.  
Type IIa



IG

April 18, 2025	3.07 CARATS
GI Report No. LG59856734	Carat Weight
CUSHION MODIFIED BRILLIANT	Color Grade
	Clarity Grade
8.88 x 7.57 x 5.14 MM	Depth
	Table
	Girdle
	Culet
	Polish
	Symmetry
	Fluorescence
	Inscription(s)
	None
	881 LG59856734
Comments:	
Grown Diamond was	
created by Chemical Vapor Deposition	
(CVD) growth process.	
Type IIa	

**Comments:**  
This Laboratory Grown Diamond was  
created by Chemical Vapor Deposition  
(CVD) growth process.